

TIRE RANGE 2021



GALAXY
APPLICATION SPECIFIC, PURPOSE BUILT.

Galaxy is one of the flagship brands of Yokohama Off-Highway Tires. Known for its robust offerings we believe that each job site comes with its unique challenges and requirements. That's why we deliver application-specific, purpose built solutions. Whether it's a rugged construction site or a rocky underground mine, hard paved port surface or soft agricultural soils, tar roads or delicate lawns, we have a tire for every need.

Our tires are manufactured in the state-of-the-art infrastructure facilities and undergo extensive research and testing. We understand that jobs are critical and downtime is not an option, that's why our tires ensure high productivity and excellent durability.

INTRODUCTION

We have been the market leader in skid steer tires in the American market, our range has been the global standard-bearer for more than two decades. We deliver value with our every product and hence have been the preferred choice of OEM's and aftermarkets year after year.



INDEX



PORT & CRANE 5-7

CONSTRUCTION 9-15

MATERIAL HANDLING 17-19

EARTHMOVER 21-25

AGRICULTURE 27-35



PORT & CRANE

RADIAL



TERMINAL MASTER

Size	LI	Type
280/75R22.5	168A8	TL
	172A5	
310/80R22.5*	175A8	TL
	179A5	



Terminal Tractor



E-4 CONTAINER HANDLER

Size	PR	Type
16.00R25	40	TL



Heavy Duty Forklift Container Handler



E-4 HARBOUR KING

Size	PR/LI	Type
18.00R25	40	TL
	214A5	



Reach Stackers



Ind YARDMASTER RADIAL

Size	LI	Type
10.00R20	166A5	TL
12.00R20	176A5	TL
12.00R24	178A5	TL



Heavy Duty Forklift

DIAGONAL



E-4 PORT MAX

Size	PR	Type
18.00-25	40	TL
16.00-25	32	TL
18.00-33	40	TL
12.00-24*	20	TT



Reach Stackers



E-4.5 PORT STAR PLUS

Size	PR	Type
16.00-25*	32	TL
18.00-25	40	TL



Reach Stackers



E-4.5 HM 450E

Size	PR	Type
18.00-33	40	TL



Reach Stackers



L-4S HM 400S

Size	PR	Type
16.00-25	32	TL
18.00-25	40	TL



Reach Stackers

*Under development

DIAGONAL

L-5S **HM 500S**

Size	PR	Type
18.00-25	40	TL



Reach Stackler

E-3 **HM 300E**

Size	PR	Type
14.00-24	28	TL



Heavy Duty Forklift



Container Handler

E-3 **HM 350E**

Size	PR	Type
12.00-24	20	TT



Heavy Duty Forklift



Container Handler

E-3 **SUPER GRIP**

Size	PR	Type
18.00-25	40	TL



Rubber Tire Gantry

E-3 **SUPER TRAC**

Size	PR	Type
14.00-24	28	TT
14.00-24	28	TL
16.00-25	28* & 32	TL
21.00-25	40	TL
21.00-35*	40	TL



Heavy Duty Forklift



Rubber Tire Gantry

E-4 **SUPER SEVERE DOUBLE WIDTH LUG**

Size	PR	Type
12.00-24	24	TT
14.00-24	28	TT



Heavy Duty Forklift



Container Handler

IND-3 **YARD-MASTER ULTRA**

Size	PR	Type
9.00-20 NHS	14	TT
10.00-20 NHS	16	TT
12.00-20 NHS	20 & 28	TT



Forklift



Heavy Duty Forklift

IND-3 **BOSSLIFT III**

Size	PR	Type
12.00-20	20 & 24	TT
9.00-20 NHS	16	TT
10.00-20 NHS	16	TT



Heavy Duty Forklift



STRENGTH

“ Our machines operate between 7:00 a.m. and 22:00 p.m., seven days a week, running back and forward in the port area. Loaded with a 40-foot container and including the weight of the machine itself it is not uncommon that a total weight of 100 tonnes is moved and that is exactly where our Galaxy Portstar Plus proves its value. Since changing to the Galaxy Portstar Plus we did not encounter any downtime due to punctures or blowouts. This of course is an important argument for us to keep operating costs as low as possible. ”



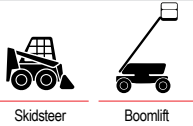
CONSTRUCTION

SOLID



SOLID BEEFY BABY SDS

Size	Rim Width
31x10-20	7.5
33x12-20	7.5
36x14-20	7.50V-20
830x285	7.50V-20



Skidsteer

Boomlift



SOLID HULK SDS

Size	Rim Width
30x10-16	6.00-16
33x12-16	8.00-16
36X10-16	8



Skidsteer



SOLID SUPER SMOOTH SDS

Size	Rim Width
31x10-20	7.5-20
33x12-20	7.5-20



Skidsteer



SOLID SUPER HIGH LIFT SDS

Size	Rim Width
13.00-24	8.5
14.00-24	8.5



Telehandler

RADIAL



R-4 MULTI TOUGH

Size	LI	Type
335/80R18	145A2/134B	TL
340/80R18	136A8	TL
405/70R18	146A8/B	TL
365/70R18IND	146A2/ 135B	TL
385/55R18IND	142A8/B	TL
335/80R20	136B	TL
365/80R20	141B	TL
405/70R20	155A2/143B	TL
405/70R24	146A8/B	TL
440/80R24	154A8	TL
500/70R24	157A8	TL
460/70R24	159A8	TL
480/80R26	160A8	TL
440/80R28	156A8	TL
440/80R30	157A8	TL



Backhoe Loader

Compact Loader

Telehandler



R-1 HIGH LIFT RADIAL

Size	LI	Type
405/70R24IND	152A8	TL
17.5LR24	150A8 & 159A8	TL
500/70R24 IND	164A8	TL



Backhoe Loader

Compact Loader

Telehandler

DIAGONAL



L-5 HULK

Size	PR	Type
10-16.5	10	TL
12-16.5	12	TL
33X15.50-16.5	14	TL
14-17.5	14	TL
12.5/80-18	14	TL



Skidsteer

Backhoe Loader



L-4 JUMBO HULK

Size	PR	Type
16.9-24	12	TL
19.5L-24	14	TL
21L-24	16	TL
18.4-26 (480/80-26)	14	TL
16.9-28 (440/80-28)	14	TL
16.9-30	14	TL



Backhoe Loader

Industrial Tractor

DIAGONAL



L-4+ KING KONG

Size	PR	Type
10-16.5	10	TL
12-16.5	12	TL



Skidsteer



L-4 MIGHTY TRAC ND

Size	PR	Type
10-16.5NHS	10	TL
12-16.5NHS	12	TL
14-17.5NHS	14	TL
12.5/80-18	12	TL
19.5L-24	14	TL



Skidsteer



Backhoe Loader



L-4 TRAC STAR ND

Size	PR	Type
10-16.5	10	TL
12-16.5	12	TL



Skidsteer



Backhoe Loader



L-3 GIRAFFE ND

Size	PR	Type
400/75-28	16	TL



Telehandler



L2/G2 GIRAFFE XLW

Size	PR	Type
16.9-28 (440/80-28)	12	TT
13.00-24	14	TL
14.00-24	16	TL
15.5-25	12	TL
17.5-25	16	TL
20.5-25	16	TL
16.9-28	12	TT



Backhoe Loader



Telehandler



Grader



Loader



L2/G2 GIRAFFE TREAD B

Size	PR	Type
13.00-24	14	TL



Telehandler



Grader



Loader



Compact Loader



G-2/L-2 MULTI PURPOSE CONSTRUCTION (MPC)

Size	PR	Type
13.00-24	12	TL
14.00-24	12 & 16	TL
15.5-25	12	TL
17.5-25	16	TL
20.5-25	16	TL
23.5-25	16	TL



Loader



Grader



Telehandler



R-4 MUDDY BUDDY

Size	PR	Type
10-16.5	8	TL
12-16.5	10	TL
14-17.5	14	TL



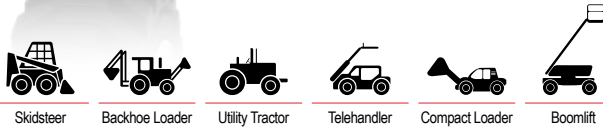
Skidsteer

DIAGONAL



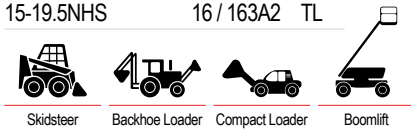
R-4 BEEFY BABY

Size	PR	Type
10-16.5	8 & 10	TL
12-16.5	10	TL
14-17.5	10 & 14	TL
10.5/80-18	10	TL
12.5/80-18	10 & 14	TL
15-19.5	14	TL
15-22.5	12 & 20	TL
18-22.5	18	TL



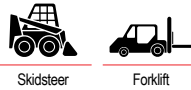
R-4 BEEFY BABY III

Size	PR/LI	Type
10-16.5	8 & 10	TL
12-16.5	10 & 12	TL
14-17.5	10 & 14	TL
15x19.5	14	TL
33X15.50-16.5NHS	14 / 150A2	TL
315/55D20NHS	12 / 151A2	TL
15-625NHS	16 / 168A2	TL
18-625NHS	16 / 175A2	TL
355/55D625NHS	14 / 157A2	TL
IN445/50D710NHS	18 / 177A2	TL
26X12D380NHS	8 / 120A2	TL
15-19.5NHS	16 / 163A2	TL



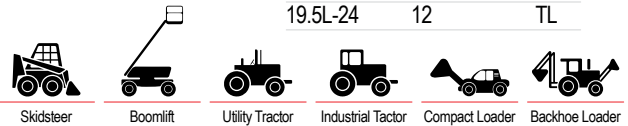
R-4 HIPPO

Size	PR	Type
27X12.50-15	8	TL
31X15.50-15	8	TL
31.5X13.00-16.5	10	TL
33X15.50-16.5	12	TL



R-4 THE MARATHONER

Size	PR	Type
20x10-10	4	TL
23X8.50-14	6	TL
25X8.50-14	4 & 6	TL
27X8.50-15	6	TL
10-16.5	8	TL
12-16.5	10	TL
14-17.5	6 & 10	TL
12.5/80-18	10	TL
(320/80-18)		
15-19.5	4 & 6 & 12	TL
12.4-20	10	TL
18.4-24	8 & 12*	TL
43x16.00-20	4	TL
19.5L-24	12	TL



R-4 SUPER INDUSTRIAL LUG

Size	PR/LI	Type
25X8.50-14	6	TL
320/80-18 IND	116A8	TL
(12.5/80-18)	& 134A8	
15-19.5	6	TL
400/70-20	144A8	TL
14.9-24	12	TL
16.9-24	8/142A8	TL
	& 12	
17.5L-24 (460/70-24)	6, 8 & 12	TL
18.4-24	12	TL
440/80-24*	12/149A8	
19.5L-24	14	TL
18.4-26 (480/80-26)	12	TL
16.9-28 (440/80-28)	152A8	TL
16.9-30	14	TL



R-4 EZ RIDER

Size	PR	Type
14.9-24	6* & 12	TL
16.9-24	6 & 12	TL
17.5L-24 (460/70-24)	10	TL
19.5L-24	10 & 12	TL
21L-24	12	TL
16.9-28 (440/80-28)	10 & 12	TL
21L-28	18	TL



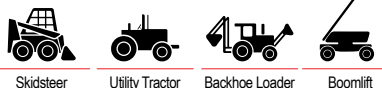
*Under development

DIAGONAL



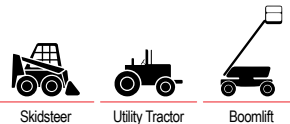
R-4 XD 2010

Size	PR	Type
5.70-12	4	TL
23x8.50-12	8 & 12	TL
27x8.50-15NHS	8	TL
27x10.50-15NHS	8	TL
10x16.5	6, 8 & 10	TL
12x16.5	6, 8, 10 & 12	TL
33x15.50-16.5	14	TL
14-17.5NHS	10 & 14	TL
15-19.5NHS	14	TL



R-4 SKIDDO

Size	PR	Type
10-16.5NHS	8	TL
10-16.5	10	TL
12-16.5NHS	10 & 12	TL



R-4 MAGNA TRACK

Size	PR/LI	Type
480/80-26 (18.4-26)	14 /138B	TL



E-2 DIG MASTER

Size	PR	Type
8.25-20	14	TT
9.00-20	14	TT
10.00-20NHS	16	TT
11.00-20	16	TT



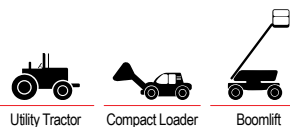
E-2 EX-1

Size	PR	Type
8.25-20	14	TT
9.00-20	14	TT
10.00-20	16	TT
11.00-20	12	TL
11.00-20	16	TT



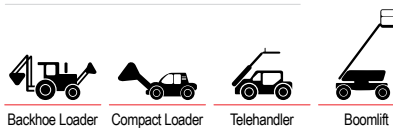
R-1 E-3 SUPER TRENCHER

Size	PR	Type
23x10.50-12	4	TL
26x12.00-12	8	TL
29x12.50-15	8	TL
31x15.50-15	8	TL
38x18.00-20	12	TL



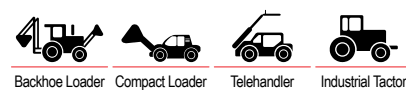
R-1 SUPER HIGH LIFT

Size	PR	Type
15.5/80-24	12 & 16	TL
17.5L-24	12	TL



R-1 INDUSTRIAL

Size	PR	Type
12.5/80-18 (320/80-18)	14	TL
17.5L-24 (460/70-24)	12	TL



DIAGONAL



R-1 WORK MASTER

Size	PR	Type
10.0/75-15.3	10	TL
11.5/80-15.3	12	TL
405/70-20	14	TL
15.5/80-24	12 & 16	TL
18.4-26	12	



Backhoe Loader Telehandler Utility Tractor



F-3 SUPER INDUSTRIAL RIB

Size	PR	Type
14.5/75-16.1	10 & 16	TL
11.00-20	16	TT



Backhoe Loader



F-3 INDUSTRIAL RIB ULTRA

Size	PR	Type
11L-16	10 & 12	TL



Backhoe Loader



F-3 HD CONSTRUCTION

Size	PR	Type
12.5/80-18 IMP	12	TL
12.5/80-18	16	TL



Backhoe Loader



F-3/R-1 WORKSTAR

Size	PR	Type
11L-15SL	10	TL
11L-16SL	10 & 12	TL



Backhoe Loader Utility Tractor Telehandler



I-3 MULTI UTILITY

Size	PR	Type
9.00-16	16	TT & TL
	20*	TT



Backhoe Loader Industrial Tractor Utility Tractor



E-7 SUPER PAVER

Size	PR	Type
14.00-20*	12	TT
21.00-25	28	TL



Paver



E-7 SAND RIB

Size	PR	Type
18.00-25	16	TL



Paver

DIAGONAL



E-7 SAND 750

Size	PR	Type
10-16.5NHS	10	TL
12-16.5NHS	12	TL



Skidsteer



C-1 SMOOTH COMPACTOR

Size	PR	Type
7.50-15	6	TL
7.50-15	12 & 14	TL
13/80-20	18	TT
11.00-20	18	TT
14/70-20	12 & 20	TL
23.1-26	10	TL



Asphalt Roller



C-1 SMOOTH ROLLER C-1

Size	PR	Type
11.00-20NHS	18	TT
9.00-20NHS	10	TT



Asphalt Roller



R-3 SUPER COMPACTOR

Size	PR	Type
23.1-26	8	TL



Compactor



R-3 COMPACTOR

Size	PR	Type
23.1-26	8 & 12	TL



Compactor



R-3 DIAMOND TREAD

Size	PR	Type
14.9-24	8	TL
18.4-26	12	TL
23.1-26	8 & 16	TL
28L-26	12 & 16	TL
24.5-32	16	TL
715/80-32	20	TL



Compactor



R-3 DIAMOND

Size	PR	Type
23.1-26	8	TL



2WD Tractor



4WD Tractor



Utility Tractor



Compactor



R-4 CTM 101

Size	LI	Type
400/80-24	162A8	TL
(15.5/80-24)IND		



Backhoe Loader



Compact Loader



Telehandler



Utility Tractor

STABILITY

“

The tires I took off their skid steer to replace with the Beefy Baby SDSs looked like they had been through over a cheese grate: it is a matter of fact that standard solid tires wear away on concrete. But Beefy Baby solids are a lot harder: I looked at the Beefy Baby tires we put on more than a year ago, and though they have some wear on them, they still look ready to tackle any job. I haven't had any problems with the Beefy Baby SDS chipping or delaminating either, which can be a problem with hard rubber. If you're doing dirt work with the Beefy Baby SDS, they will last for a long, long time.

”





MATERIAL HANDLING

SOLID



SOLID

YARDMASTER SDS

Size	Rim Width
15x4 1/2-8 (125/75-8)	3.00D-8
16x6-8 (150/75-8)	4.33R-8
5.00-8	3.00D-8
18x7-8 (180/70-8)	4.33R-8
18x9-8	7.00-8
140/55-9	4.00E-9
6.00-9	4.00E-9
21x8-9 (200/75-9)	6.00E-09
200/50-10	6.50-10
6.50-10	5.00F-10
6.50-10	5.50F-10
7.50-10	5.00F-10
23x9-10 (225/75-10)	6.50E-10
180/60-10	5
7.00-12	5.00S-12
23x10-12	8.00G-12
27x10-12	8.00G-12
315/45-12(23x12-12)	10.00G-12
7.00-15	5.50-15
7.00-15	6
7.50-15	5.50-15
7.50-15	6.50-15
8.15-15 (28x9-15)	7.00-15
8.25-15	5.50-15
8.25-15	6.50-15
28X9-15(8.15-15)	6.50-15
250-15 (250/70-15)	7.50-15
250-15 (250/70-15)	7.00-15
300-15 (315/70-15)	8.00-15
355/50-15	9.75
8.25-20	7
8.25-20	6.5
9.00-20	7.50-20
9.00-20	6.50-20
9.00-20	7.00-20
10.00-20	7.00-20
10.00-20	7.50-20
10.00-20	8
11.00-20	7.50-20
11.00-20	8.00-20
12.00-20	8.50-20
12.00-20	8.00-20
355/50-20	10.00-20
12.00-24	8.50-20



Forklift



Heavy Duty Forklift



Excavator

All sizes are available in (lock ring/standard heel type/lip type) rims

SOLID

LIFTOP SDS



Size	Rim Width
5.00-8	3.00D-8
16X6-8 (150/75-8)	4.33R-8
15X4 1/2-8 (125/75-8)	3.00D-8
15X4 1/2-8 (125/75-8)	3.25-8
18x7-8 (180/70-8)	4.33R-8
140/55-9	4.00E-9
6.00-9	4.00E-9
21X8-9 (200/75-9)	6.00-9
6.50-10	5.00F-10
6.50-10	5.50F-10
200/50-10	6.50-10
23X9-10 (225/75-10)	6.50-10
23X9-10 (225/75-10)	6.50E-10
23X10-12	8.00G-12
7.00-12	5.00-12
27X10-12 (250/75-12)	8.00G-12
3.00-15 (315/70-15)	8.00-15
8.15-15(28X9-15) (225/75-15)	7.00-15
8.25-15	6.50-15
2.50-15 (250/70-15)	7.50-15
7.00-15	5.50-15
2.50-15	7.00-15



Forklift

All sizes are available in (standard heel type/li) rims

SOLID

LIFTER SDS



Size	Rim Width
15x4.5-8	3.00D-8
5.00-8	3.00D-8
16x6-8	4.33R-8
18x7-8	4.33R-8
140/55-9	4.00E-09
6.00-9	4.00E-09
6.50-10	5.00F-10
200/50-10	6.50F-10
23x9-10	6.50F-10
7.00-12	5.00S-12
8.25-15	6.50-15
28x9-15 (8.15-15)	7.00-15
250-15	7.00-15
300-15	8.00-15
7.00-15	5.50-15
10.00-20	7.50-20



Forklift

All sizes are available in (lock ring/standard heel type only) rims

SOLIDS

SOLID

LIFTOP SDS IND



Lug



Smooth



Rib

Machine	Pattern	Size	Rim	Variant	
Forklift	LIFTOP SDS IND (Lug)	10.00-20 (290/95-20)	8.0-20	Black	Non-marking
		355/65-15 (32x12½-15 (350-15))	9.75-15	Black	Non-marking
	LIFTOP SDS IND (Smooth)	11.00-20 (300/95-20)	8.0-20	Black	Non-marking
GSE (Baggage Carts)	LIFTOP SDS IND (RIB)	3.00-4	2.10-4	Black	Non-marking
	LIFTOP SDS IND (Lug)	4.00-4	2.50C-4	Black	Non-marking
	LIFTOP SDS IND (Lug)	4.00-8	3.00D-8	Black	Non-marking
	LIFTOP SDS IND (RIB)	4.00-8	2.75-8	Black	---
	LIFTOP SDS IND (RIB)	4.00-8	3.00-8	Black	---
	LIFTOP SDS IND (RIB)	4.00-8	3.75-8	Black	---

All sizes are available in (standard heel type/lip type) rims



Forklift



Baggage Cart

PRESS ON BAND SOLIDS

SOLID

YM SDS



Smooth



Lug



Traction

Rim	Size	(LUG)	(Smooth)	(Traction)
6.5	10x5x61/2	*	✓	*
8	14x41/2x8	*	✓	*
11.25	15x5x111/4	*	✓	*
	161/4x5x111/4	*	✓	✓
	161/4x6x111/4	*	✓	✓
	161/4x7x111/4	*	✓	✓
10.5	16x5x101/2	*	✓	✓
	16x6x101/2	✓	✓	✓
	16x7x101/2	✓	✓	✓
12.125	18x6x121/8	✓	✓	✓
	18x7x121/8	✓	✓	✓
	18x8x121/8	✓	✓	✓
15	21x7x15	✓	✓	✓
	21x8x15	✓	✓	✓
	21x9x15	✓	✓	✓
16	22x12x16	*	*	*
	22x14x16	*	*	*
	22x8x16	*	✓	*
	22x9x16	*	✓	*
22	28x10x22	*	*	*
	28x12x22	*	*	*

Tires are available in both black and non-marking version



Forklift

RADIAL



Ind YARDMASTER RADIAL

Size	LI	Type
10.00R20	166A5	TL
12.00R20	176A5	TL
12.00R24	178A5	TL



Heavy Duty Forklift

DIAGONAL



**Ind-1
Ind-3** YARDMASTER ULTRA IND

Size	PR	Type
4.00-8 NHS	8	TT
5.00-8 NHS	10	TT
18X7-8 NHS	16	TT
6.00-9 NHS	10	TT
21X8-9 NHS	14	TT
6.50-10 NHS	12	TT
23X9-10 NHS	18	TT
7.00-12 NHS	12	TT
250-15 NHS	16	TT
7.00-15 NHS	12	TT
7.50-15 NHS	12	TT
7.50-15* NHS	14	TT
8.25-15 NHS	14	TT
28X9-15 NHS	14	TT
300-15 NHS	20	TT
32X12.1-15 NHS	24	TT
7.50-16 NHS	16	TT
9.00-20 NHS	14	TT
10.00-20 NHS	16	TT
12.00-20 NHS	20	TT
12.00-20 NHS	28	TT



Forklift



Heavy Duty Forklift



**Ind-1
Ind-3** YARDMASTER

Size	PR	Type
5.00-8 NHS	10	TT
18X7-8 NHS	16	TT
6.00-9 NHS	10	TT
21X8-9 NHS	14 & 16	TT
6.50-10 NHS	12	TT
7.00-12 NHS	12 & 14	TT
7.00-15 NHS	12, 14 & 16	TT
7.50-15 NHS	12 & 14	TT
8.15-15 (28X9-15) NHS	14	TT
8.25-15 NHS	14	TT
8.25-15 NHS	16	TT
28X9-15(8.15-15)NHS	16	TT
250-15 NHS	16 & 20	TT
300-15 NHS	20	TT



Forklift



Ind-3 BOSSLIFT III

Size	PR	Type
9.00-20	16	TT
10.00-20	16	TT
12.00-20	20/24	TT



Forklift



EARTHMOVER

SOLID



SOLID LHD-500 SDS

Size	Rim Width
14.00-24	10.00-24
14.00-25	10.00-25
17.5-25	14.00-25



Loader



Load Haul Dumper



SOLID SUPER SMOOTH SDS

Size	Rim Width
16.00-25	11.25-25
20.5-25	17.00-25
23.5-25	19.50-25
26.5-25	22.00-25
29.5-25	25.00-25



Loader



SOLID LHD-510 SDS

Size	Rim Width
20.5-25	17.00-25
23.5-25	19.5-25
26.5-25	22.0-25

(SH/With Aperture)



Loader

RADIAL



G-2 MGSR 200

Size	LI	Type
14.00R24	153A8	TL
17.5R25	176A2/153A8	TL
20.5R25	186A2/161A8	TL



Grader



E3L3 LDSR 300

Size	LI	Type
17.5R25	182A2/167B	TL
20.5R25	193A2/177B	TL
23.5R25	201A2/185B	TL
26.5R25	209A2/192B	TL
29.5R25	216A2/200B	TL



Loader



Dump-Truck



E4L4 HTSR 400

Size	LI	Type
23.5R25	185B/201A2	TL
26.5R25	193B/209A2	TL
29.5R25	200B/216A2	TL



Loader



Dump-Truck



E3L3 LDSR 310

Size	LI	Type
20.5R25	193A2	TL
20.5R25	177B	TL



Loader



Articulated Dump Truck

RADIAL



E-2/G-2/L-2

MGSR 210

Size	LI	Type
14.00R24TG 153A8		TL
17.5R25	167B/176A2/ 153A8	TL
20.5R25	177B/186A2/ 161A8	TL

Articulated
Dump Truck

Loader



Grader



Dozer



L5

LDSR 510

Size	LI	Type
23.5R25	201 A2	TL



Loader



Dozer

DIAGONAL

E-2/
L-2

GIANT HIPPO

Size	PR	Type
20.5-25	20	TL
23.5-25	20 & 24	TL
26.5-25	20	TL
23.1-26	16	TL



Loader



L-2

MULTI PURPOSE CONSTRUCTION (MPC)

Size	PR	Type
13.00-24	12	TL
14.00-24	12, 16	TL
15.5-25	12	TL
17.5-25	16	TL
20.5-25	16	TL
23.5-25	16	TL



Grader



G-2

SUPER MUD & SNOW

Size	PR	Type
14.00-24	16	TL
17.5-25	16	TL



Grader



Loader

L-2/
G-2

GIRAFFE XLW

Size	PR	Type
13.00-24	14	TL
14.00-24	14, 16	TL
15.5-25	12	TL
17.5-25	16	TL
20.5-25*	16	



Grader



Loader



L-2

GIRAFFE TREAD B

Size	PR	Type
13.00-24	14	TL
14.00-24*	12	TL



Grader



Loader



L-2

ROCK MINE LUG PLUS

Size	PR	Type
10.00-20	18	TT
11.00-20	18	TT
12.00-24	20	TT



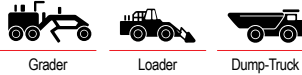
Tipper

DIAGONAL



E-3/L-3 EXR 300

Size	PR	Type
14.00-24	28	TT, TL
14.00-25	20	TT
15.5-25	12	TL
17.5-25	16, 20, 24	TL
20.5-25	16, 20, 24	TL
23.5-25	20, 28	TL
26.5-25	28	TL
29.5-25	28	TL



Grader Loader Dump-Truck



E-3/L-3 PREMIUM ROCK LUG

Size	PR	Type
17.5-25	16, 20	TL
20.5-25	16, 20 & 24	TL
23.5-25	16, 20, 24 & 28	TL
26.5-25	20, 26, 28 & 36	TL
29.5-25	28	TL
29.5-29	28	TL



Loader Dump-Truck



E-3 SUPER TRAC

Size	PR	Type
14.00-24	28	TT, TL
16.00-25	32	TL



Dump-Truck



E-3/L-3 SUPER GRIP

Size	PR	Type
18.00-25	40	TL



Dump-Truck



E-4 DOUBLE WIDTH LUG

Size	PR	Type
9.00-20	18	TT
12.00-20	28	TT
12.00-24	24	TT
14.00-24	28	TT



Dump-Truck



E-4/L-4 ROCK MAX

Size	PR	Type
12.00-24	20	TT
14.00-25	24	TL
18.00-25	32 & 40	TL
18.00-33	40	TL
24.00-35	48	TL



Dump-Truck Tipper Loader



L-6 SUPER SEVERE MINE DWL

Size	PR	Type
9.00-20	18	TL
12.00-20	28	TT
14.00-20*		



Loader Articulated Dump Truck Rubber Tire Gantry



L-5 LHD-500

Size	PR	Type
17.5-25	20	TL
20.5-25	20	TL
23.5-25	20	TL
26.5-25	26	TL



Loader Articulated Dump Truck Rubber Tire Gantry

*Under development

DIAGONAL



L-5 LHD-500 A

Size	PR	Type
26.5-25*	26	TL
29.5-25*	28	TL
35/65-33	42	TL



Loader

Articulated
Dump TruckRubber Tire
Gantry

L-5S SUPER SEVERE MINE SLICK

Size	PR	Type
12.00-20	20	TT
17.5-25	28	TL
18.00-25	32	TL
20.5-25	20	TL
23.5-25	24	TL
26.5-25	32	TL
29.5-25	40	TL
35/65-33	42	TL



Loader

Articulated
Dump TruckRubber Tire
Gantry

L-4 L5 THE KING OF COAL

Size	PR	Type
8.25-15	12	TT
35X15-15	32	TL
35X15-16	32	TL



Loader

Articulated
Dump TruckRubber Tire
Gantry

E-3 ROCK MINE LUG

Size	PR	Type
9.00-20	14 & 16	TT
10.00-20	18	TT
12.00-20	24	TT



Dump-Truck

Articulated
Dump TruckRubber Tire
Gantry

L-2 GIRAFFE XLW D

Size	PR	Type
13.00-24	14	TL



Grader



Loader



E-3 S-300

Size	Rim	PR
16/70-20	13x20	16
13.00-24	8.0TGx24	16
14.00-24	10x24	16 & 24
14.00-25	10.00x25	20
15.5-25	12.00x25	12
17.5-25	14.00x25	16 & 20
20.5-25	17.00x25	16, 20 & 24
23.5-25	19.50x25	20 & 24
26.5-25	22x25	28 & 32
29.5-25	25x25	32



Loader

Articulated
Dump Truck

Loader



L-3 GIRAFFE ND

Size	PR	Type
370/75-28	14	TL
400/75-28	16	TL



Grader



Loader



E-4 LUG KING

Size	PR	Type
12.00-20ML	20	TT



Tipper

AGILITY

“ I’m not changing tires half as much as I used to. The Giraffes are lasting a lot longer. With the angular bars on the Giraffe it gives them traction. It’ll do asphalt material and still be able to throw mud out of the tire. I’ve had machines come in with mud over the axles. I know they’ve buried these machines in the mud and they’ve been able to get them out. ”





AGRICULTURE

RADIAL



R-1W

EARTHPRO 850

Size	LI	Type
280/85R20	112A8/112B	TL
320/85R20	119A8/119B	TL
250/85R24	109A8/109B	TL
280/85R24	115A8/115B	TL
320/85R24	122A8/122B	TL
340/85R24	125A8/125B	TL
380/85R24	131A8/131B	TL
420/85R24	137A8/137B	TL
280/85R28	118A8/118B	TL
320/85R28	124A8/124B	TL
380/85R28	133A8/133B	TL
420/85R28	139A8/139B	TL
340/85R28	127A8/127B	TL
460/85R30	145A8/145B	TL
380/85R30	135A8/135B	TL
420/85R30	140A8/140B	TL
420/90R30	147A8/147B	TL
420/90R30	142A8/142B	TL
320/85R32	126A8/126B	TL
420/85R34	142A8/142B	TL
460/85R34	147A8/147B	TL
380/85R34	137A8/137B	TL
320/85R36	128A8/128B	TL
340/85R36	132A8/132B	TL
340/85R38	133A8/133B	TL
420/85R38	144A8/144B	TL
460/85R38	149A8/149B	TL
520/85R38	155A8/155B	TL
320/85R38	143A8/143B	TL
380/80R38	142A8/142B	TL
480/80R42	151A8/151B	TL
520/85R42	157A8/157B	TL
320/80R42	141A8/141B	TL
320/90R42	147A8/147B	TL
480/80R46	158A8/158B	TL
520/85R46	158A8/158B	TL
320/90R46	148A8/148B	TL
380/90R46	165A8/165B	TL



2WD Tractor



4WD Tractor



MFWA



R-1W

EARTHPRO 700

Size	LI	Type
300/70R20	120A8/120B	TL
320/70R20	123A8/123B	TL
280/70R20	116A8/116B	TL
320/70R24	116A8/116B	TL
360/70R24	122A8/122B	TL
380/70R24	125A8/125B	TL
420/70R24	130A8/130B	TL
480/70R24	138A8/138B	TL
320/70R28	119A8/119B	TL
360/70R28	125A8/125B	TL
380/70R28	127A8/127B	TL
420/70R28	133A8/133B	TL
480/70R28	140A8/140B	TL
520/70R30	145A8/145B	TL
420/70R30	134A8/134B	TL
480/70R30	141A8/141B	TL
480/70R34	143A8/143B	TL
520/70R34	148A8/148B	TL
480/70R38	145A8/145B	TL
520/70R38	150A8/150B	TL
710/70R38	172A8/172B	TL
580/70R38	155A8/155B	TL
710/70R42	173A8/173B	TL



2WD Tractor



4WD Tractor



MFWA



R-1W

EARTHPRO 650

Size	LI	Type
480/65R24	140D/143A8	TL
480/65R28	142D/145A8	TL
540/65R28	149D/152A8	TL
600/65R28	154D/157A8	TL
540/65R30	150D/153A8	TL
540/65R38	153D/156A8	TL
600/65R38	159D/162A8	TL
650/65R38	171D	TL
650/65R42	170D/173A8	TL



2WD Tractor



4WD Tractor



MFWA

RADIAL


R-1 EARTH PRO RC

Size	LI	Type
230/95R32	128D/131A8	TL
270/95R36	136D/ 139A8	TL
270/95R44	142D/145A8	TL
270/95R48	142D/145A8	TL
230/95R44	134D/137A8	TL



2WD Tractor



MFWA



Sprayer


R-1W EARTH PRO RADIAL 800

Size	LI	Type
380/80R38	142A8	TL
320/80R42	141A8	TL
480/80R42	151A8/151B	TL
480/80R46	158A8/158B	TL



2WD Tractor



4WD Tractor



MFWA


R-1W EARTH PRO RADIAL 900

Size	LI	Type
420/90R30	142A8/142B	TL
	147A8/147B	TL
320/90R42	147A8/147B	TL
320/90R46	148A8/148B	TL
380/90R46	165A8/165B	TL



2WD Tractor



4WD Tractor



MFWA

BIAS


R-1 EARTH-PRO 45

Size	PR	Type
9.5-20	6	TT
11.2-24	8	TT
12.4-24	8	TT
13.6-24	8	TT
14.9-24	8	TT
16.9-24	8	TT
8.3-24	8	TT
9.5-24	8	TT
11.2-28	8	TT
12.4-28	8	TT
13.6-28	8	TT
14.9-28	8	TT
16.9-28	8	TT
16.9-30	8	TT
18.4-30	8 & 12	TT
16.9-34	8	TT
18.4-34	8	TT
12.4-36*	8	TT
15.5-38	8	TT
16.9-38	8	TT
18.4-38	8	TT



2WD Tractor



MFWA


R-1 EARTH-PRO

Size	PR/LI	Type
11.2-24	8	TL
12.4-24	8	TL
13.6-24	8	TL
14.9-24	6 & 8	TL
16.9-24	8	TL
14.9-28	8	TL
16.9-28	8/131A8	TL
16.9-30	8/132A8	TL
16.9-30	6/126A8	TL
18.4-30	8	TL
23.1-30	12/151A8	TL
24.5-32	12/156A8	TL
18.4-34	8	TL
13.6-38	8	TL
15.5-38	8/133A8	TL
16.9-38	8	TL
	12/142A8	TL
18.4-38	8	TL
20.8-38	8	TL
	10/148A8	TL
	14/ 155A8	TL



2WD Tractor



MFWA

*Under development

BIAS



R-1 AGRI TRAC II

Size	PR/LI	Type
180/95-14 (7-14)	6	TL
7-16	6/84A6	TL
9.5-16	6/95A6	TL
8-16	6/91A6	TL
9.5-24	6/106A8	TL
11.2-24	6 & 8/116A8	TL
13.6-28	6/121A6	TL
12.4-24	8/121A8	TL
16.9-24*	6	
14.9-28	6/125A8	TL
16.9-28	6	TL
16.9-30	6/130A8	TL
18.4-30	8/139A8	TL
18.4-30	16/155A8	TL
16.9-34	8/139A8	TL



2WD Tractor



MFWA



R-1 SUPER TRACTOR

Size	PR	Type
9.5-16	6	TL
30.5-32	16	TL



MFWA



R-1 IRRIGATION R-1

Size	PR/LI	Type
11.2-38	6/114A8	TL
14.9-24	8/128A8	TL



MFWA



2WD Tractor



R-1 EARTHPRO 348

Size	PR	Type
16.9-30	12	TL



MFWA



R-1 COMBINE STAR

Size	PR/LI	Type
30.5L-32	16/166A6	TL
30.5L-32	18/170A6	TL



MFWA

COMBINE HARVESTER



R-1

COMBINE STAR

Size	PR	Type
30.5L-32	16	TL
30.5-32	18	TL



Combine Harvester



R-3

MIGHTY MOW

Size	PR	Type
27X8.50-15	12	TL



Combine Harvester

RADIAL FLOTATION



R-3

SUPER SOIL SOFTEE

Size	LI	Type
750/60R26	175A8	TL
	163A8	
850/50R32	192A8	TL
	180A8	TL



Trailer



FLOTSTAR

Size	LI	Type
600/50R22.5	159D	TL
560/60R22.5	165D	TL
600/55R26.5	165D	TL
650/55R26.5	169D	TL
710/50R26.5	170D	TL



Trailer

DIAGONAL FLOTATION



I-3

FLOT PRO

Size	LI	Type
260/75-15.3	126A8	TL
400/60-15.5	148A8	TL
500/45-22.5	154A8	TL
500/60-22.5	163A8	TL
550/45-22.5	159A8	TL
550/60-22.5	166A8	TL
600/50-22.5	165A8	TL



Trailer



Baler



Agricultural Implements



I-3

FLOTATION

Size	LI	Type
400/60-15.5	148A8	TL
400/55-22.5	152A8/140A8	TL
550/45-22.5	159A8/156B	TL
600/50-22.5	165A8	TL



Trailer



Baler



Agricultural Implements



I-3

HONEY WAGON

Size	PR	Type
725X65-26	20	TL



Wagon



R-3

SUPER SOFT

Size	PR	Type
22.5L-16.1	10 & 14	TL



Wagon

IMPLEMENT



I-2 IMP PRO

Size	PR/LI	Type
10.0/80-12 IMP	10PR/124A6	TL
7.00-12	6PR /99A6	TL
10.0/75-15.3 IMP	10PR	TL
	129A6/125A8	
	14PR	TL
	136A6/132A8	
11.5/80-15.3 IMP	14PR	TL
	145A6/141A8	
12.5/80-15.3	14PR	TL
	148A6/144A8	
400/60-15.5	16PR	TL
	152A6/148A8	
10.5/65-16	14PR/134A6	TL
13.0/55-16	14PR /137A6	TL
19.0/45-17 IMP	14PR /148A6	TL
500/50-17 IMP	14PR /153A6	TL
10.5/80-18	10PR /135A6	TL
12.5/80-18 IMP	16PR	TL
	152A6/148A8	
16.0/70-20 IMP	12PR /155A6	TL
13.0/65-18 IMP	16PR/148A6	TL
15.0/70-18*	16	TL



Trailer



Baler



Agricultural Implements



F-2 EARTH-PRO F-2

Size	PR	Type
5.00-15	4	TT
10.00-16	8	TT
11.00-16	8	TT
5.50-16	6	TT
6.00-16	6	TT
6.50-16	6	TT
7.50-16	6	TT
7.50-16	8	TT
9.00-16	10	TT
7.50-18	8	TT
4.00-19	4	TT
6.00-19	6	TT
7.50-20	8	TT



2WD Tractor



F-2 FRONT FARM

Size	PR	Type
5.00-15	6	TT
7.50-16	8	TT
9.00-16	10	TT
10.00-16	8 & 10	TT
11.00-16	10	TT
7.50-18	8	TT
6.00-19	6	TT



2WD Tractor



F-2M FRONT FARM MULTI RIB

Size	PR	Type
11L-15SL	8	TL
9.5L-15SL	8	TL
10.00-16SL	8	TL
11.00-16SL	8	TL
14L-16.1SL	12	TL



2WD Tractor



I-1 AG IMPLEMENT (STUBBLE PROOF) HWY

Size	PR	Type
20.5x8-10	8	TL
12.5L-16.5	14	TL
32x15.50-16.5SL	14	TL



Trailer



Baler



Agricultural Implements



I-1 IMP MASTER 350 FI

Size	PR	Type
9.5L-15	D (8PR)	TL
11L-15	D (8PR)	TL
	F (12PR)	
12.5L-15	D (8PR) &	TL
	F (12PR)	
31x13.50-15	8	TL



Trailer



Baler



Agricultural Implements

IMPLEMENT



I-2 IMPMASTER 200

Size	PR	Type
11L-14	8	TT
7.60-15	8	TL & TT
9.5L-15	8	TL & TT
11L-15	8	TL & TT
11L-15	12	TL
12.5L-15	10	TL & TT
16.5L-16.1	10 & 14	TL



Trailer



Agricultural Implements



R-3 SEEDER STUBBLE PROOF

Size	PR	Type
31x13.50-15	8 & 12	TL



Wagon



Agricultural Implements



I-1 STUBBLE PROOF HWY

Size	PR	Type
20.5X8-10	8	TL
9.5L-15	12	TL
11L-15	12	TL
12.5L-16.5	14	TL
32x15.50-16.5	14	TL



Trailer



Baler



Agricultural Implements



I-2 LO-PRO HI-FLO

Size	PR	Type
400/60-15.5	14	TL
19.0/45-17	14	TL
12.5/80-18	14	TL



Trailer



Tanker



Wagon



I-2 TRAILER SPECIAL

Size	PR	Type
9.00-10	10	TL
8-14.5	14	TL
9-14.5	14	TL



Trailer



I-2 TRAILER SPECIAL II

Size	PR	Type
20.5x8.0-10	95J	TL
26x12-12*		TL



Trailer

*Under development

IMPLEMENT



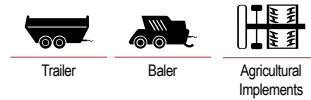
I-2 IMP MASTER 350 PLANTER

Size	PR	Type
9-22.5	14	TL
11-22.5	12 & 14	TL



I-4 RIB IMPLEMENT

Size	PR/LI	Type
9.5L-14SL	8	TL
11L-14SL	8	TL
6.70-15SL	6	TL
7.60-15SL	8	TL
9.5L-15SL	8	TL
9.5L-15	12	TL
11L-15SL	8 & 12	TL
12.5L-15SL	8 & 12	TL
12.5L-15	10, 12 & 14	TL
7.50-16SL	8 & 14	TL
9.00-16SL	10	TL
11.00-16SL	12	TL
14L-16.1SL	14 /138B	TL
19L-16.1SL	12	TL
21.5L-16.1	10 & 14	TL
21.5L-16.1SL	18 /156B	TL



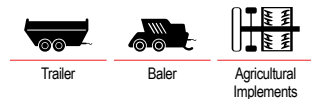
IMP SLICK IMPLEMENT

Size	PR	Type
20.5x8.0-10	10	TL
13.0/65-18 IMP	16	TL



I-3 FLOT PRO

Size	PR	Type
260/75-15.3	12PR	TL
	126A8	
400/60-15.5	16PR	TL
	148A8	
15.0/70-18IMP	16PR	TL
	151A6	
	148A8	
500/45-22.5	16PR	TL
	154A8	
500/60-22.5	16PR	TL
	163A8	
550/45-22.5	16PR	TL
	159A8	
550/60-22.5	16PR	TL
	166A8	
600/50-22.5	16PR	TL
	165A8	



LAWN, TURF & UTILITY TRACTOR

RADIAL



R-3

GARDEN PRO

Size	LI	Type
220/55R12	82A8/82B	TL
240/60R12	89A8/89B	TL
220/55R14	93A8/93B	TL
200/60R15	83A8/83B	TL
200/65R16	94A8/94B	TL
200/70R16	94A8/94B	TL
240/70R16	104A8	TL
260/70R16	109A8/109B	TL
280/70R16	112A8/112B	TL
260/70R18	114A8/114B	TL
280/70R18	114A8/114B	TL
320/65R18	109A8/106B	TL
300/70R20	110A8/110B	TL
320/70R20	113A8/113B	TL
380/70R20	122 A8/B	TL
380/70R24	125A8/125B	TL
360/70R24	122A8	TL
420/70R24	130A8/130B	TL
320/85R28	124A8/124B	TL
360/70R28	125A8/125B	TL
480/70R28	140A8/140B	TL
340/85R28	127A8/127B	TL
480/70R30	141 A8/B	TL
480/70R34	143A8	TL



2WD Tractor



Utility Tractor



MFWD



R-3+

GARDEN PRO XTD

Size	LI	Type
315/55R12	85A8/85B	TL
215/65R14	90A8/90B	TL
215/70R15	90A8/90B	TL
265/70R16.5	105A8/105B	TL
305/70R16.5	105A8/105B	TL
355/65R17.5	130A8/130B	TL
385/65R19.5	130A8/130B	TL
(15R19.5)		
460/70R24	139A8/139B	TL
500/70R24	140A8/140B	TL
(19.5LR24)		
420/85R24	130A8/130B	TL
(16.9R24)		



2WD Tractor



Utility Tractor



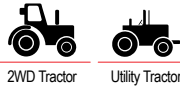
MFWD

DIAGONAL



R-3 TURF SPECIAL

Size	PR	Type
24X13LL-12	4	TL
25X10.50LL-15	6	TL
27X10.50LL-15	6	TL
27X12LL-15	6	TL
27x14LL-15	6	TL
12LL-16	6	TL
22.5LL-16.1	6	TL
33X16LL-16.1	10	TL
33X18LL-16.1	10	TL
41X18LL-16.1	6	TL
41X18LL-22.5	14, 20	TL



2WD Tractor Utility Tractor



R-3 AGRI AIR SEED STUBBLE PROOF

Size	PR	Type
33x15.50-16.5	10	TL

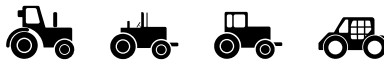


Seeder Wagon



R-3 MIGHTY MOW

Size	PR	Type
18X8.50-8	4	TL
23X8.50-12SSNHS	4	TL
23X8.50-14	6	TL
27X8.50-15	6 & 12*	TL
27x10.50-15	4	TL
27x14LL-15		
29X12.50-15NHS	4	TL
9.5-16	6	TL
12.4-16	6	TL
21.5L-16.1SL	6	TL
10-16.5	8	TL
12-16.5	4	TL
12-16.5	10	TL
12-16.5	12	TL
33X15.50-16.5	10	TL
14-17.5	6 & 14*	TL
41X14.00-20	4	TL
44X18.00-20NHS	4	TL
17.5L-24	8	TL
19.5L-24	12	TL



2WD Tractor Utility Tractor MFWA Golf-Cart



R-3 MIGHTY MOW-TS

Size	PR	Type
15X6.50-8NHS	4	TL
16x6.50-8	4	TL
16x6.50-8NHS	6	TL
15X6.50-8NHS	4	TL
16X7.50-8 NHS	4	TL
18X8.50-8 NHS	4	TL
18x9.50-8	6	TL
20x10.00-8	4	TL
18X8.50-10 NHS	4	TL
18x10.50-10	4	TL
20X10.00-10	6	TL
22x11.00-10NHS	4	TL
20X12.00-10NHS	4	TL
23x8.50-12	6	TL
23x8.5-12*		
23X9.50-12NHS	4	TL
23X10.50-12	6	TL
24X12-12NHS	4	TL
26X12-12 NHS	4	TL
26X12.00-12 NHS	8	TL
24X12.00-14NHS	6	TL



Mower Trailer Golf-Cart

*Under development

Alliance Tire Europe BV

De Entree 59,
1101 BH,
Amsterdam Zuidoost,
The Netherlands

Tel: +31 (0)20 2184 770
Fax: +31 (0)20 2184 771
e-Mail: info.europe@yokohama-oh.com
Website: www.yokohama-oh.com

Disclaimer: The specifications mentioned in this document are subject to change with no prior intimation or notice.
Please visit www.yokohama-oh.com for updated information and details.