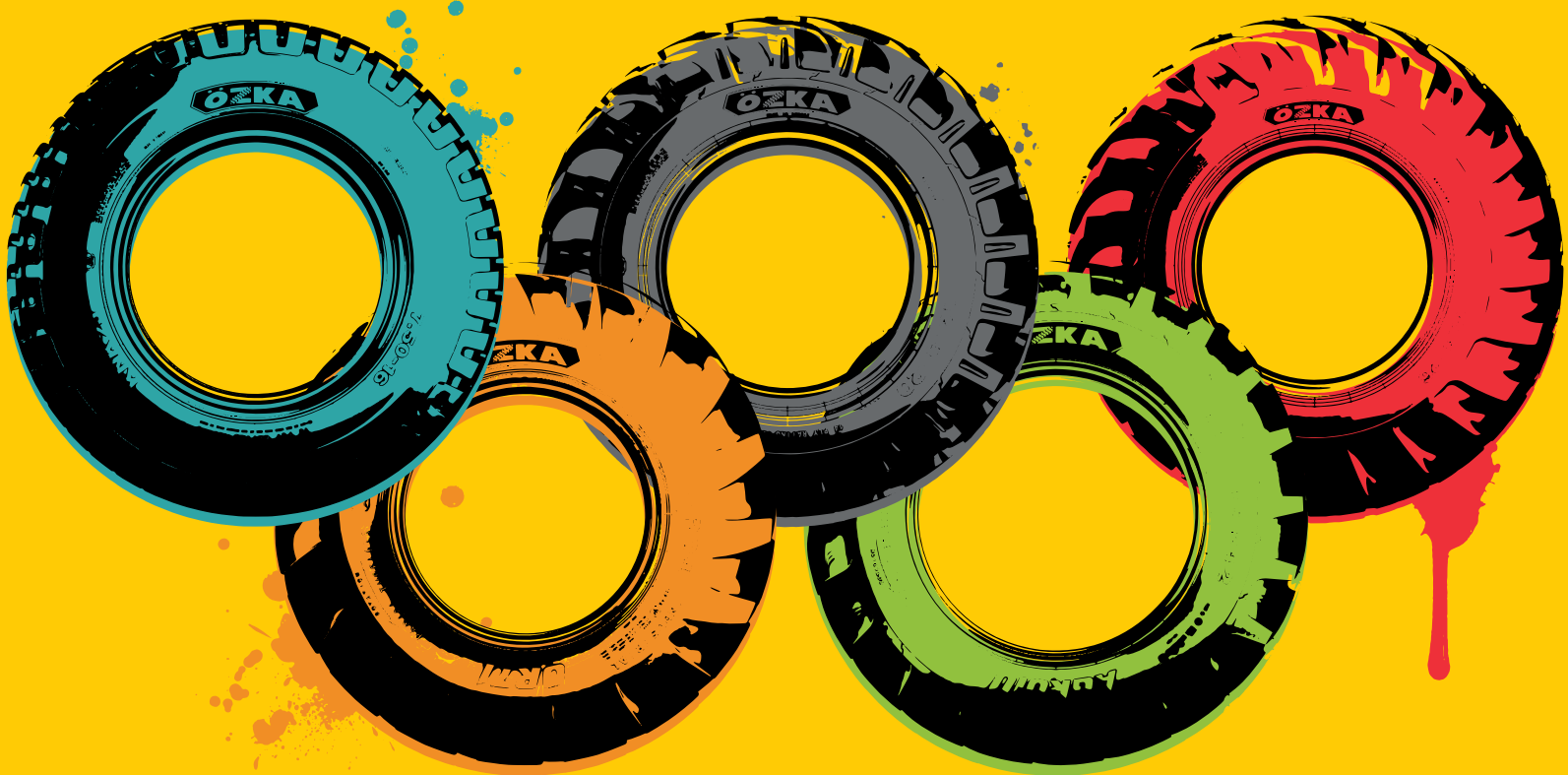


ÖZKA

Agricultural and Industrial Tyres



PRODUCT
CATALOGUE

INDEX

ÖZKA
BUILT ON EXPERTISE

TYRE READING INFORMATION	17
AGRICULTURAL TYRES	20-45
<i>Radial Tractor Tyres</i>	22-25
<i>Radial Flotation Tyres</i>	26
<i>Front Tractor Tyres</i>	28-30
<i>Rear Tractor Tyres</i>	31-33
<i>Irrigation Tyres</i>	34
<i>Harvester Tyres</i>	34-35
<i>Flotation Tyres</i>	36-40
<i>Implement Tyres</i>	41-43
<i>Forestry Tyres</i>	44
INDUSTRIAL, EM, OTR TYRES	46-55
<i>Radial EM Tyres</i>	48
<i>EM / Industrial Tyres</i>	48-53
<i>Compactor Tyres</i>	53-54
<i>Forklift Tyres</i>	54
LCV TYRES	56-59
<i>Light Truck & Minibus Tyres</i>	58-59
MPT TYRES	60-63
<i>Military Tyres</i>	62-63
CORRESPONDING TYRE SIZE	66





Built on Expertise since 1991

Özka Tyres, which has been established in 1991, determined its vision as being the leader brand in Turkish market, and as a reputable brand in the global market.



A World Brand

Özka Tyres, which works with more than 400 contracted dealers in Turkey, is on the way to become a world brand providing its high-quality products to more than 80 countries around the world.



Wide Product Range

Özka Tyres provides a wide range of Tractor Front-Rear, Trailer, Harvester, Yard/Field, Caterpillar, Forklift, Panzer, Pick up/Minibus, Radial Tractor and Radial Flotation tyre groups all around the world in order to satisfy all needs related to agricultural and industrial tyre sector.



R&D Center and Quality Management

Özka Tyres, produces its products with its expertise as a result of innovative works of R&D team with 30-engineer team. It internalises Total Quality Managements and practises; ISO 9001, ISO 14001, ISO 45001 and ISO 27001. Thus, it provides product quality and product safety from raw material procurement to post-shipment controls.



Customer Satisfaction as a Key Principle

Özka Tyres, with its strong, reliable and durable tyres appropriate with national and international standards (TSE, ETRTO, ECE), considers customer satisfaction before and after sales as the fundamental principle. With its Technical Services Team, it responds to proposals, solves complaints and meets requests of customers all around the world in a short time.



Human Resources Power

Özka Tyres, which has about 1200 employees, considers human resources as the basis of sustainable growth, and keeps its investments for further improvements. It plans, and practices the attending of its employees to domestic and abroad events; such as expos, workshops and trainings in order to follow the sectoral developments and innovations.

BUILT ON EXPERTISE



OUR CERTIFICATES



OCCUPATIONAL HEALTH AND SAFETY MANAGEMENT



ENVIRONMENTAL MANAGEMENT SYSTEM



QUALITY MANAGEMENT SYSTEM



INFORMATION SECURITY MANAGEMENT SYSTEM

ART MEETS EXPERTISE

INSPIRED BY ANDY WARHOL

The works of Andy Warhol have emerged as a result of reinterpreting objects in everyday life. When you look at his works, you figure out that he uses a type of art where mass production objects are frequently used with a fresh new style.

We, as Özka, approach our products with Warhol's perspective and Olympic Games' discipline to make a difference. As it's said in the Olympic Oath, we believe in respecting and abiding by the rules, qualifications and in the spirit of fair play. We also believe that together we are stronger. We share the same passion, emotion, excellence and professionalism and produce our mass production products accordingly.

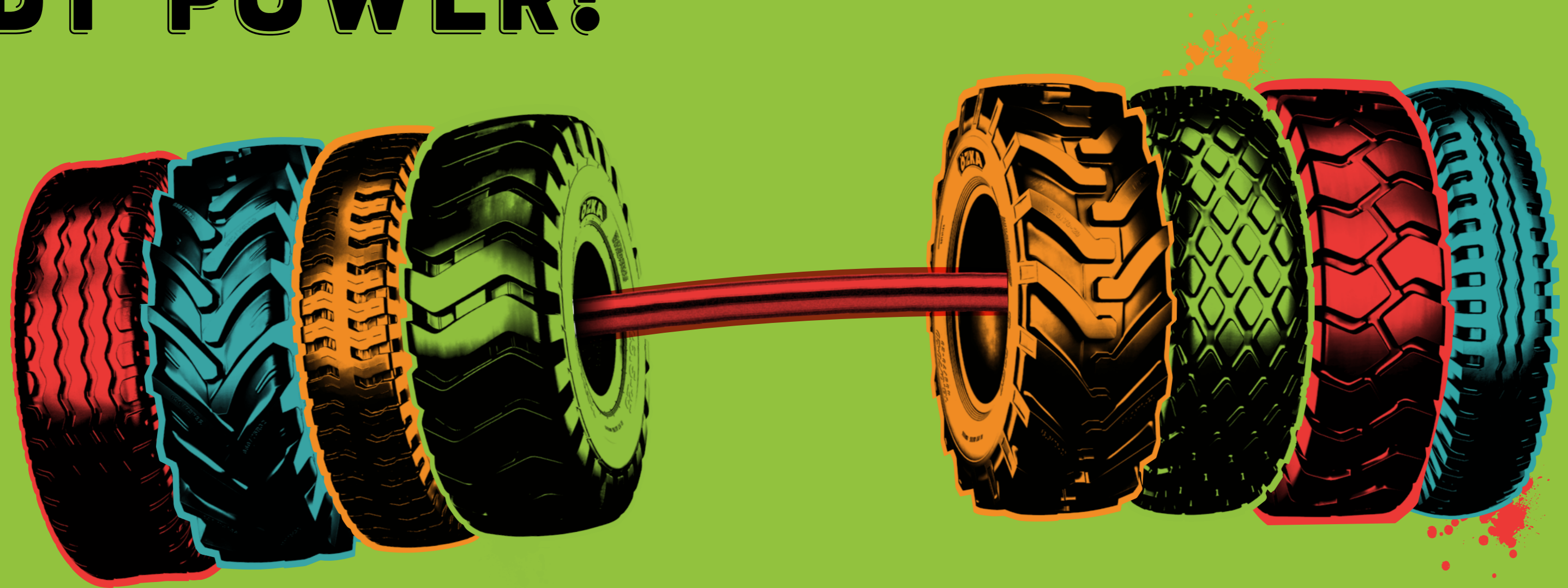
This catalogue is a combination of Warhol's and ÖZKA's art in perspective of Olympic Games.



özka

**INSPIRED
BY POWER!**

örka



ÖZKA

**FEEL THE EXCELLENT COMFORT
AND TRACTION!**

**READY,
STEADY,
GO!**

örka

**CUSTOMER
ORIENTED APPROACH!
ON TIME DELIVERY!
FAST SOLUTIONS!**

ÖZKA



**EXPERIENCE
YOU NEED,
RESULTS
YOU TARGET.**

**THE RIGHT CHOICE FOR EXPERTS
WHO WANT TO REACH THE TARGET!**

ÖZKA



örka



**PRODUCED
BY EXPERTS
FOR SUCCESS!**

ÖZKA EXPERTISE IS ALL AROUND THE WORLD

ÖZKA



örka

EXPERTISE IN ANY DETAILS



ÖZKA

örka

PRODUCT RANGE

RADIAL TRACTOR TYRES



AGROLOX **AGRO10** **AGRO11**

RADIAL FLOTATION TYRES



AGRIGOR20

IMPLEMENT TYRES



KNK42 **KNK48** **KNK50** **KNK52** **KNK54** **KNK140**

FORESTRY TYRES



FRS40

FRONT TRACTOR TYRES



KNK30 **KNK32** **KNK33** **KNK35** **KNK50**

REAR TRACTOR TYRES



KNK50 **KNK53**

RADIAL EM TYRES



OR71

EM / INDUSTRIAL TYRES



KNK44 **KNK65** **KNK66** **IND80** **IND85** **IND88**

IRRIGATION TYRES



KNK55

HARVESTER TYRES



KNK36 **KNK48** **KNK50**

FLOTATION TYRES



KNK22 **KNK25** **KNK26**

EM / INDUSTRIAL TYRES



KNK70 **KNK72** **KNK74**

COMPACTOR TYRES



KNK77 **KNK88**

FORKLIFT TYRES



KNK40

FLOTATION TYRES



KNK27 **KNK28** **KNK42** **KNK46** **KNK48** **KNK52** **KNK56**

LIGHT TRUCK & MINIBUS TYRES



KNK20 **KNK24** **KNK25** **KNK126**

MILITARY TYRES



KNK10 **KNK12** **KNK14**

ÖZKA

AGRICULTURAL TYRES

AGROLOX **AGRO10** **AGRO11** **AGRIGOR20**

KNK30 **KNK32** **KNK33** **KNK35**

KNK50 **KNK53** **KNK55** **KNK36**

KNK48 **KNK26** **KNK27** **KNK22**

KNK25 **KNK28** **KNK42** **KNK52**

KNK56 **KNK46** **KNK54** **KNK140**

FRS40





AGROLOX

RADIAL TRACTOR TYRES

NEW PATTERN

- Increased traction both on land and on the road with its renewed pattern and double-angle tread structure
- Comfortable driving both in the field and on the road
- Extra protection in the tread area against fatigue and cracking thanks to the increased lug block
- Increased productivity with special pattern design
- High resistance against punctures and tears thanks to 3-layers bar structure

60 SERIES	Product Code	Tyre Size	TT/TL	Inflated Unloaded Dimension		Load Index	Speed Symbol	Load & Pressure		Dynamic Rolling Circumference	Static Loaded Radius
				Section Width	Overall Diameter			Tyre Load Capacity	Tyre Pressure At Max. Load		
	UR6032900302OZK	900/60 R32	TL	905	1870	182/185	D/A8	8500/9250	58	5543	829
65 SERIES	UR6518320302OZK*	320/65 R18	TL	319	873	109/109	A8/B	1030/940	23	2612	395
	UR6520440302OZK*	440/65 R20	TL	441	1080	138/141	D/A8	2360/2580	35	3213	483
	UR6528540302OZK*	540/65 R28	TL	550	1413	149/152	D/A8	3250/3560	35	4219	636
	UR6538650302OZK*	650/65 R38	TL	650	1820	163/166	D/A8	4875/5300	35	5449	825
	UR6530540302OZK*	540/65 R30	TL	550	1470	150/153	D/A8	3350/3650	35	4396	664
	UR6542650302OZK*	650/65 R42	TL	650	1913	165/168	D/A8	5150/5600	35	5744	872
	UR6528440302OZK*	440/65 R28	TL	445	1285	131/134	D/A8	1950/2120	35	3857	585
	UR6538540302OZK*	540/65 R38	TL	550	1675	156/153	A8/D	4000/3650	35	5039	767
	UR6524440302OZK*	440/65 R24	TL	441	1182	135/138	D/A8	2180/2385	35	3534	534
	UR6534540302OZK*	540/65 R34	TL	550	1575	155/152	A8/D	3875/3550	35	4725	716
	UR6528600302OZK*	600/65 R28	TL	601	1491	154/157	D/A8	3750/4105	35	4407	657
	UR6528480302OZK*	480/65 R28	TL	479	1335	136/139	D/A8	2240/2455	23	3998	605
	UR6524480302OZK*	480/65 R24	TL	479	1234	133/136	D/A8	2060/2255	23	3681	555
UR6538600302OZK*	600/65 R38	TL	601	1745	154/157	D/A8	3750/4105	35	5237	795	
70 SERIES	UR7024380302OZK	380/70 R24	TL	380	1190	125/128	D/A8	1650/1800	23	3556	537
	UR7024420302OZK	420/70 R24	TL	418	1248	130/133	D/A8	1900/2080	23	3720	560
	UR7028380302OZK	380/70 R28	TL	380	1293	127/130	D/A8	1750/1910	23	3879	588
	UR7028420302OZK	420/70 R28	TL	418	1351	133/136	D/A8	2060/2250	23	4043	612
	UR7028480302OZK	480/70 R28	TL	480	1425	140/143	D/A8	2500/2730	23	4253	641
	UR7034480302OZK	480/70 R34	TL	479	1580	143/146	D/A8	2725/2980	23	4739	718
	UR7034520302OZK	520/70 R34	TL	516	1640	148/151	D/A8	3150/3440	23	4908	742
	UR7038480302OZK	480/70 R38	TL	480	1685	145/148	D/A8	2900/3170	23	5067	771
	UR7038520302OZK	520/70 R38	TL	516	1749	150	D	3350	23	5223	793
	UR7038580302OZK	580/70 R38	TL	577	1827	155	D	3875	23	5441	823
	UR7046620302OZK	620/70 R46	TL	625	2036	162/165	D/A8	4750/5200	23	6124	931
	UR7028320302OZK	320/70 R28	TL	319	1189	119/119	A8/B	1360/1240	23	3585	547
	UR7038710302OZK	710/70 R38	TL	716	1959	171/174	D/A8	6150/6730	35	5842	880
UR7042710302OZK	710/70 R42	TL	716	1959	173/176	D/A8	6500/7120	35	5874	890	
85 SERIES	UR8542520302OZK	520/85 R42	TL	516	1951	157/157	A8/B	4130/3750	23	5851	887
	UR8528420302OZK	420/85 R28	TL	418	1425	139/139	A8/B	2430/2210	23	4252	641
	UR8538520302OZK	520/85 R38	TL	516	1849	155/155	A8/B	3880/3530	23	5531	836
	UR8538520302OZR	520/85 R38 REINFORCED	TL	516	1849	169/169	A8/B	5800/5280	52	5531	836
	UR8542520302OZR	520/85 R42 REINFORCED	TL	516	1951	167/167	A8/B	5450/4960	46	5851	887
90 SERIES	UR9030420302OZK	420/90 R30	TL	418	1518	147/147	A8/B	3080/2800	35	4531	683

AGRO10

RADIAL TRACTOR TYRES

- Comfortable drive due to flexible sidewall structure
- Mud repellent feature with its specially designed tread pattern
- High performance due to deep treads and wide base track



65 SERIES

Product Code	Tyre Size	TT/TL	Inflated Unloaded Dimension		Load Index	Speed Symbol	Load & Pressure		Dynamic Rolling Circumference	Static Loaded Radius
			Section Width	Overall Diameter			Tyre Load Capacity	Tyre Pressure At Max. Load		
			mm	mm						
UR6516320102OZK	320/65 R16	TL	319	822	117	D	1285/2830	35	2432	367
UR6520340102OZK	340/65 R20	TL	343	950	124	D	1600/3520	35	2817	427
UR6520420102OZK	420/65 R20	TL	418	1054	135	D	2180/4800	35	3114	469
UR6524440102OZK	440/65 R24	TL	445	1185	128/131	D/A8	1800/1950	35	3542	535
UR6524480102OZK	480/65 R24	TL	480	1235	133/136	D/A8	2060/2240	35	3683	555
UR6524540102OZK	540/65 R24	TL	550	1320	146/149	D/A8	3000/3250	34	3924	589
UR6526750102OZK	750/65 R26	TL	755	1640	166/163	A8/B	5300/4875	34	4844	722
UR6528440102OZK	440/65 R28	TL	445	1285	131/134	D/A8	1950/2120	35	3857	585
UR6528480102OZK	480/65 R28	TL	480	1337	142/145	D/A8	2650/2900	35	4004	606
UR6528540102OZK	540/65 R28	TL	550	1420	149/152	D/A8	3250/3550	35	4238	639
UR6528600102OZK	600/65 R28	TL	591	1491	154/157	D/A8	3750/4125	34	4439	668
UR6530540102OZK	540/65 R30	TL	550	1470	150/153	D/A8	3350/3650	34	4396	664
UR6530600102OZK	600/65 R30	TL	601	1542	155	D	3875/8540	35	4546	685
UR6532800102OZK	800/65 R32	TL	800	1858	178/175	A8/B	7500/6900	46	5509	824
UR6534540102OZK	540/65 R34	TL	550	1575	152/155	D/A8	3550/3875	34	4725	716
UR6538540102OZK	540/65 R38	TL	550	1675	153/156	D/A8	3650/4000	34	5039	767
UR6534600102OZK	600/65 R34	TL	601	1644	160/157	D/A8	4515/10040	35	4920	744
UR6538600102OZK	600/65 R38	TL	595	1750	159/162	D/A8	4375/4750	35	5251	797
UR6538650102OZK	650/65 R38	TL	650	1820	163/166	D/A8	4875/5300	34	5449	825
UR6542650102OZK	650/65 R42	TL	650	1913	165/168	D/A8	5150/5600	34	5744	872

70 SERIES

UR7016240102OZK	240/70 R16	TL	245	745	104/104	A8/B	900/900	34	2234	339
UR7016260102OZK	260/70 R16	TL	260	770	109/109	A8/B	1030/1030	34	2305	349
UR7016280102OZK	280/70 R16	TL	282	798	112/112	A8/B	1120/1120	34	2384	360
UR7018280102OZK	280/70 R18	TL	282	849	114/114	A8/B	1180/1180	34	2544	385
UR7020260102OZK	260/70 R20	TL	260	875	113/113	A8/B	1150/1150	34	2634	401
UR7020280102OZK	280/70 R20	TL	282	900	116/116	A8/B	1250/1250	34	2704	411
UR7020300102OZK	300/70 R20	TL	295	952	120/117	A8/B	1400/1285	34	2851	432
UR7020320102OZK	320/70 R20	TL	319	982	113/113	A8/B	1150/1150	23	2936	444
UR7020360102OZK	360/70 R20	TL	357	1042	129/129	A8/B	1850/1850	34	3106	468
UR7020380102OZK	380/70 R20	TL	380	1082	122/122	A8/B	1500/1500	23	3219	484
UR7024320102OZK	320/70 R24	TL	319	1095	116/116	A8/B	1250/1250	23	3288	499
UR7024360102OZK	360/70 R24	TL	357	1152	122/122	A8/B	1500/1500	23	3449	522
UR7024380102OZK	380/70 R24	TL	380	1190	125/125	A8/B	1650/1650	23	3556	537
UR7024420102OZK	420/70 R24	TL	418	1248	130/130	A8/B	1900/1900	23	3720	560
UR7024460102OZK	460/70 R24	TL	460	1260	159/159	A8/B	4380/3980	46	3754	565
UR7024480102OZK	480/70 R24	TL	480	1320	138/135	A8/B	2360/2180	23	3924	589
UR7026480102OZK	480/70 R26	TL	480	1380	139/136	A8/B	2430/2240	23	4109	618
UR7028360102OZK	360/70 R28	TL	357	1255	125/125	A8/B	1650/1650	23	3772	573
UR7028380102OZK	380/70 R28	TL	380	1293	127/127	A8/B	1750/1750	23	3879	588
UR7028420102OZK	420/70 R28	TL	418	1351	133/133	A8/B	2060/2060	23	4043	612
UR7028480102OZK	480/70 R28	TL	480	1425	140/140	A8/B	2500/2500	23	4253	641
UR7030420102OZK	420/70 R30	TL	418	1400	134/131	A8/B	2120/1950	23	4198	636
UR7030480102OZK	480/70 R30	TL	480	1480	141/138	A8/B	2575/2360	23	4424	668
UR7030600102OZK	600/70 R30	TL	595	1605	158/156	A8/B	4250/4000	34	4777	718
UR7034480102OZK	480/70 R34	TL	479	1580	143/140	A8/B	2725/2500	23	4739	718
UR7034520102OZK	520/70 R34	TL	516	1640	148/146	A8/B	3150/3000	23	4908	742
UR7038480102OZK	480/70 R38	TL	480	1685	145/142	A8/B	2900/2650	23	5067	771
UR7038520102OZK	520/70 R38	TL	516	1750	150/147	A8/B	3350/3075	23	5251	797
UR7038580102OZK	580/70 R38	TL	580	1830	155/152	A8/B	3875/3550	23	5477	829
UR7038710102OZK	710/70 R38	TL	720	1965	171/174	D/A8	6150/6700	34	5859	883
UR7042710102OZK	710/70 R42	TL	720	2061	173/176	D/A8	6500/7100	34	6162	931

AGRO10

RADIAL TRACTOR TYRES

80 SERIES	Product Code	Tyre Size	TT/ TL	Inflated Unloaded Dimension		Load Index	Speed Symbol	Load & Pressure		Dynamic Rolling Circumference	Static Loaded Radius
				Section Width	Overall Diameter			Tyre Load Capacity	Tyre Pressure At Max. Load		
				mm	mm			kg	psi		
	UR8042480102OZK	480/80 R42	TL	485	1845	151/148	A8/B	3450/3150	23	5552	845
	UR8046480102OZK	480/80 R46	TL	485	1945	164/164	A8/B	5000/5000	46	5866	895
85 SERIES	UR8520280102OZK	280/85 R20 (11.2 R20)	TL	282	984	112/109	A8/B	1120/1030	23	2942	444
	UR8520320102OZK	320/85 R20 (12.4 R20)	TL	319	1052	119/116	A8/B	1360/1250	23	3134	472
	UR8524250102OZK	250/85 R24 (9.5 R24)	TL	251	1036	109/109	A8/B	1030	23	3121	475
	UR8524280102OZK	280/85 R24 (11.2 R24)	TL	282	1086	115/112	A8/B	1215/1120	23	3262	495
	UR8524320102OZK	320/85 R24 (12.4 R24)	TL	319	1154	122/119	A8/B	1500/1360	23	3454	523
	UR8524340102OZK	340/85 R24 (13.6 R24)	TL	343	1188	125/122	A8/B	1650/1500	23	3551	536
	UR8524380102OZK	380/85 R24 (14.9 R24)	TL	380	1256	131/128	A8/B	1950/1800	23	3743	563
	UR8524420102OZK	420/85 R24 (16.9 R24)	TL	418	1324	137/134	A8/B	2300/2060	23	3935	591
	UR8528250102OZK	250/85 R28 (9.5 R28)	TL	251	1137	112/112	A8/B	1120	23	3406	516
	UR8528280102OZK	280/85 R28 (11.2 R28)	TL	282	1187	118/115	A8/B	1320/1215	23	3580	546
	UR8528320102OZK	320/85 R28 (12.4 R28)	TL	320	1255	124/121	A8/B	1600/1450	23	3772	573
	UR8528340102OZK	340/85 R28 (13.6 R28)	TL	343	1289	127/124	A8/B	1750/1600	23	3868	587
	UR8528380102OZK	380/85 R28 (14.9 R28)	TL	380	1357	133/130	A8/B	2060/1900	23	4060	614
	UR8528420102OZK	420/85 R28 (16.9 R28)	TL	418	1425	139/136	A8/B	2430/2240	23	4253	641
	UR8530380102OZK	380/85 R30 (14.9 R30)	TL	380	1408	135/132	A8/B	2180/2000	23	4220	639
	UR8530420102OZK	420/85 R30 (16.9 R30)	TL	418	1476	140/137	A8/B	2500/2300	23	4413	667
	UR8530460102OZK	460/85 R30 (18.4 R30)	TL	455	1544	145/142	A8/B	2900/2650	23	4605	694
	UR8532320102OZK	320/85 R32 (12.4 R32)	TL	320	1365	126/126	A8/B	1700/1700	34	4115	627
	UR8534420102OZK	420/85 R34 (16.9 R34)	TL	418	1578	142/139	A8/B	2650/2430	23	4733	718
	UR8534460102OZK	460/85 R34 (18.4 R34)	TL	455	1646	147/144	A8/B	3075/2800	23	4925	745
	UR8536320102OZK	320/85 R36 (12.4 R36)	TL	320	1465	128/125	A8/B	1800/1650	23	4429	677
	UR8536340102OZK	340/85 R36 (13.6 R36)	TL	343	1495	132/129	A8/B	2000/1850	23	4514	689
	UR8538320102OZK	320/85 R38 (12.4 R38)	TL	320	1515	143/143	A8/B	2725/2725	52	4587	703
	UR8538340102OZK	340/85 R38 (13.6 R38)	TL	343	1545	133/130	A8/B	2060/1900	23	4672	715
	UR8538380102OZK	380/85 R38 (14.9 R38)	TL	380	1611	139/136	A8/B	2430/2240	23	4858	741
	UR8538420102OZK	420/85 R38 (16.9 R38)	TL	418	1679	144/141	A8/B	2800/2575	23	5050	768
	UR8538460102OZK	460/85 R38 (18.4 R38)	TL	455	1747	149/146	A8/B	3250/3000	23	5243	795
	UR8538520102OZK	520/85 R38 (20.8 R38)	TL	516	1849	155/152	A8/B	3875/3550	23	5531	836
	UR8538650102OZK	650/85 R38	TL	650	2071	173/176	D/A8	6500/7100	34	6159	925
	UR8542520102OZK	520/85 R42 (20.8 R42)	TL	516	1955	157/157	A8/B	4125/4125	23	5863	889
	UR8546340102OZK	340/85 R46 (13.6 R46)	TL	345	1756	150/151	D/A8	3350/3450	52	5332	819
	UR8548340102OZK	340/85 R48 (13.6 R48)	TL	343	1800	151/152	D/A8	3450/3550	58	5472	842
UR8538460102OZK	460/85 R38 REINFORCED	TL	455	1747	149/146	A8/B	3250/3000	23	5243	795	
UR8538520102OZK	520/85 R38 REINFORCED	TL	516	1849	169	A8	5800	23	5531	836	
UR8542520102OZK	520/85 R42 REINFORCED	TL	516	1955	167	A8	5450	23	5863	889	
90 SERIES	UR9046320102OZK	320/90 R46	TL	320	1750	146/146	A8/B	3000/3000	46	5315	817
	UR9046380102OZK	380/90 R46	TL	380	1860	159/162	D/A8	4375/4750	58	5626	861
	UR9050320102OZK	320/90 R50	TL	320	1850	150/150	A8/B	3350/3350	52	5630	867
	UR9054320102OZK	320/90 R54	TL	320	1950	155/155	A8/B	3875/3875	58	5944	917
95 SERIES	UR0020095102OZK	9.5 R20	TL	241	938	108/105	A8/B	1000/925	23	2812	426
	UR9532210102OZK	210/95 R32	TL	215	1215	114/114	A8/B	1180/1180	34	3691	567
	UR9532230102OZK	230/95 R32	TL	230	1255	128/128	A8/B	1800/1800	58	3804	583
	UR9532270102OZK	270/95 R32	TL	275	1330	136/136	A8/B	2240/2240	58	4016	613
	UR9536210102OZK	210/95 R36	TL	215	1320	118/118	A8/B	1320/1320	34	4019	619
	UR9536230102OZK	230/95 R36	TL	230	1355	130/130	A8/B	1900/1900	58	4118	633
	UR9536270102OZK	270/95 R36	TL	275	1435	139/139	A8/B	2430/2430	58	4345	665
	UR9538270102OZK	270/95 R38	TL	275	1485	140/140	A8/B	2500/2500	58	4502	691
	UR9542230102OZK	230/95 R42	TL	230	1505	133/136	D/A8	2060/2240	58	4590	709
	UR9542270102OZK	270/95 R42	TL	275	1581	141	A8	2575/5670	58	4788	737
	UR9544210102OZK	210/95 R44	TL	215	1520	120/120	A8/B	1400/1400	34	4649	720
	UR9544230102OZK	230/95 R44	TL	230	1560	132/132	A8/B	2000/2000	58	4762	736
	UR9544270102OZK	270/95 R44	TL	275	1635	142/142	A8/B	2650/2650	58	4974	766
	UR9546270102OZK	270/95 R46	TL	275	1685	143/143	A8/B	2725/2725	58	5131	791
	UR9546300102OZK	300/95 R46	TL	300	1740	148/148	A8/B	3150/3150	58	5287	813
	UR9548230102OZK	230/95 R48	TL	230	1660	136/136	A8/B	2240/2240	58	5077	786
	UR9548270102OZK	270/95 R48	TL	275	1735	144/144	A8/B	2800/2800	58	5289	816
	UR9552300102OZK	300/95 R52	TL	300	1900	156/159	D/A8	4000/4375	58	5787	892
UR9554270102OZK	270/95 R54	TL	275	1885	146/146	A8/B	3000/3000	58	5761	891	



AGRÖ11

RADIAL TRACTOR TYRES

- Comfortable drive due to flexible sidewall structure
- Mud repellent feature with its specially designed tread pattern
- High performance due to deep treads and wide base track

70 SERIES	Product Code	Tyre Size	TT/ TL	Inflated Unloaded Dimension		Load Index	Speed Symbol	Load & Pressure		Dynamic Rolling Circumference	Static Loaded Radius
				Section Width	Overall Diameter			Tyre Load Capacity	Tyre Pressure At Max. Load		
				mm	mm						
	UR7042620112OZK	620/70 R42	TL	625	1935	166/166	A8/B	5300/5300	35	5806	881

75 SERIES	UR7526620112OZK	620/75 R26	TL	630	1600	166/166	A8/B	5300/5300	46	4731	706
	UR7530620112OZK	620/75 R30	TL	630	1695	163/161	A8/B	4875/4625	35	5032	754
	UR7532650112OZK	650/75 R32	TL	650	1795	172/172	A8/B	6300/6300	46	5331	799



AGRIGOR20

**RADIAL
FLOTATION TYRES**

NEW PATTERN

- Ideal for all terrain conditions with its reinforced bead design
- Low soil compact feature thanks to its wide base
- Self-cleaning thanks to its non-directional tread pattern
- Reinforced tread and sidewall profiles against punctures

45 SERIES	Product Code	Tyre Size	TT/ TL	Inflated Unloaded Dimension		Load Index	Speed Symbol	Load & Pressure		Dynamic Rolling Circumference	Static Loaded Radius
				Section Width	Overall Diameter			Tyre Load Capacity	Tyre Pressure At Max. Load		
				mm	mm			kg	psi		
	UR4522560202OZK	560/45 R22.5	TL	564	1076	152	D	3550/7820	58	3222	488
50 SERIES	UR5022600202OZK	600/50 R22.5	TL	591	1172	159	D	4375/9640	58	3493	526
60 SERIES	UR6022500202OZK	500/60 R22.5	TL	490	1140	155	D	3875/8545	58	3403	513

ÖZKA



**TARGET IS
THE MAJOR
POINT FOR
ÖZKA!**

**THE BEST CHOICE FOR
THE TOUGHEST CONDITIONS.**



KNK30

FRONT TRACTOR TYRES

- Tractor front tyre for general use
- Resistance to stone and impacts thanks to strong and robust body
- Smooth driving with gutters at central back
- Prevention of skidding thanks to treads in shoulders
- Long lasting and economic use
- Excellent performance in highway and land

KNK30	Product Code	Tyre Size & Ply Rating	TT/TL	Inflated Unloaded Dimension		Load Index	Speed Symbol	Load & Pressure		Dynamic Rolling Circumference	Static Loaded Radius
				Section Width	Overall Diameter			Tyre Load Capacity	Tyre Pressure At Max. Load		
				mm	mm			kg	psi		
	U3162011OZK	6.00-16 6PR	TT	165	735	88	A6	560	48	2206	335
	U3162021OZK	6.00-16 8PR	TT	165	735	93	A6	650	48	2206	335
	U3163011OZK	6.50-16 6PR	TT	175	760	91	A6	615	45	2277	345
	U3163021OZK	6.50-16 8PR	TT	175	760	97	A6	730	54	2277	345
	U3164011OZK	7.50-16 6PR	TT	205	805	98	A6	750	41	2404	363
	U3164021OZK	7.50-16 8PR	TT	205	805	103	A6	875	54	2404	363



KNK32

FRONT TRACTOR TYRES

- Long lasting front tractor tyre
- High maneuverability thanks to nondirectional use feature
- Resistant structure against punctures thanks to increased tread depth

KNK32	Product Code	Tyre Size & Ply Rating	TT/TL	Inflated Unloaded Dimension		Load Index	Speed Symbol	Load & Pressure		Dynamic Rolling Circumference	Static Loaded Radius
				Section Width	Overall Diameter			Tyre Load Capacity	Tyre Pressure At Max. Load		
				mm	mm			kg	psi		
	U3164111OZK	7.50-16 6PR	TT	205	805	98	A6	750	41	2404	363
	U3164121OZK	7.50-16 8PR	TT	205	805	103	A6	875	54	2404	363
	U3181021OZK	7.50-18 8PR	TT	205	860	106	A6	950	54	2575	390
	U3201021OZK	6.50-20 8PR	TT	175	865	102	A6	850	54	2605	397
	U3202021OZK	7.50-20 8PR	TT	205	915	108	A6	1000	49	2747	417



KNK33

FRONT TRACTOR TYRES

- Extra strong with its increased tread depth
- Comfortable driving in the field and on the road by pattern design
- Mud-free pattern

KNK33

Product Code	Tyre Size & Ply Rating	TT/TL	Inflated Unloaded Dimension		Load Index	Speed Symbol	Load & Pressure		Dynamic Rolling Circumference	Static Loaded Radius
			Section Width	Overall Diameter			Tyre Load Capacity	Tyre Pressure At Max. Load		
			mm	mm			kg	psi		
U3162111OZK	6.00-16 6PR	TT	165	735	88	A6	560	48	2206	335
U3162121OZK	6.00-16 8PR	TT	165	735	93	A6	650	48	2206	335
U3163111OZK	6.50-16 6PR	TT	175	760	91	A6	615	45	2277	345
U3163121OZK	6.50-16 8PR	TT	175	760	97	A6	730	54	2277	345
U3164211OZK	7.50-16 6PR	TT	205	805	98	A6	750	41	2404	363
U3164221OZK	7.50-16 8PR	TT	205	805	103	A6	875	54	2404	363
U3191011OZK	6.00-19 6PR	TT	165	814	93	A6	650	48	2453	374



KNK35

FRONT TRACTOR TYRES

- Suitable to asphalt and land usage
- Excellent maneuverability and nondirectional use
- Resistant structure against punctures
- Straight movement stability in soft land

KNK35

Product Code	Tyre Size & Ply Rating	TT/TL	Inflated Unloaded Dimension		Load Index	Speed Symbol	Load & Pressure		Dynamic Rolling Circumference	Static Loaded Radius
			Section Width	Overall Diameter			Tyre Load Capacity	Tyre Pressure At Max. Load		
			mm	mm			kg	psi		
U3161011OZK	5.50-16 6PR	TT	150	710	86	A6	530	54	2135	325
U3162211OZK	6.00-16 6PR	TT	165	735	88	A6	560	48	2206	335
U3162221OZK	6.00-16 8PR	TT	165	735	93	A6	650	48	2206	335
U3163211OZK	6.50-16 6PR	TT	175	760	91	A6	615	45	2277	345
U3163221OZK	6.50-16 8PR	TT	175	760	97	A6	730	54	2277	345
U3164311OZK	7.50-16 6PR	TT	205	805	98	A6	750	41	2404	363
U3164321OZK	7.50-16 8PR	TT	205	805	103	A6	875	54	2404	363
U3166021OZK	9.00-16 8PR	TT	234	855	111	A6	1090	45	2545	383
U3167021OZK	10.00-16 8PR	TT	274	895	115	A6	1215	41	2658	399
U3168021OZK	11.00-16 8PR	TT	315	965	118	A6	1320	36	2856	427
U3181221OZK	7.50-18 8PR	TT	205	860	106	A6	950	54	2575	390
U3161021OZK	5.50-16 8PR	TT	150	710	91	A6	615	54	2135	325



KNK50

FRONT TRACTOR TYRES

- High traction
- Easy movement ability with anti-ground feature
- Preventing clusters in the center and sidewalls during movement
- Facilitating releasing of muds thanks to windowed blocks

KNK50

Product Code	Tyre Size & Ply Rating	TT/TL	Inflated Unloaded Dimension		Load Index	Speed Symbol	Load & Pressure		Dynamic Rolling Circumference	Static Loaded Radius
			Section Width	Overall Diameter			Tyre Load Capacity	Tyre Pressure At Max. Load		
			mm	mm			kg	psi		
U3151021OZK	7.50-15 8PR	TT	205	780	99	A6	775	52	2325	350
U3162311OZK	6.00-16 6PR	TT	165	735	88	A6	560	48	2206	335
U3162321OZK	6.00-16 8PR	TT	165	735	93	A6	650	48	2206	335
U3163311OZK	6.50-16 6PR	TT	175	760	91	A6	615	45	2277	345
U3163321OZK	6.50-16 8PR	TT	175	760	97	A6	730	54	2277	345
U3164421OZK	7.50-16 8PR	TT	205	805	103	A6	875	54	2404	363
U3181421OZK	7.50-18 8PR	TT	205	860	106	A6	950	54	2575	390
U3202121OZK	7.50-20 8PR	TT	205	915	108	A6	1000	49	2747	417
U3203011OZK	9.5-20 6PR	TT	241	940	101	A6	825	30	2818	427
U3203021OZK	9.5-20 8PR	TT	241	940	106	A6	950	35	2817	427
U3203022OZK	9.5-20 8PR	TL	241	940	106	A6	950	35	2817	427
U3204021OZK	11.2-20 8PR	TT	285	1005	113	A6	1150	38	3001	453
U3204022OZK	11.2-20 8PR	TL	285	1005	113	A6	1150	38	3001	453



KNK50

REAR TRACTOR TYRES

- High traction
- Easy movement ability with anti-ground feature
- Preventing clusters in the center and sidewalls during movement
- Facilitating releasing of muds thanks to windowed blocks

KNK50

Product Code	Tyre Size & Ply Rating	TT/TL	Inflated Unloaded Dimension		Load Index	Speed Symbol	Load & Pressure		Dynamic Rolling Circumference	Static Loaded Radius
			Section Width	Overall Diameter			Tyre Load Capacity	Tyre Pressure At Max. Load		
			mm	mm			kg	psi		
U5241011OZK	8.3-24 6PR	TT	210	1009	105	A6	925	30	3044	465
U5241021OZK	8.3-24 8PR	TT	210	1009	108	A6	1000	35	3044	465
U5242011OZK	9.50-24 6PR	TT	241	1050	110	A6	1060	26	3160	481
U5242021OZK	9.50-24 8PR	TT	241	1050	116	A6	1250	34	3160	481
U5243011OZK	11.2-24 6PR	TT	284	1105	110	A6	1060	26	3316	503
U5243021OZK	11.2-24 8PR	TT	284	1105	116	A6	1250	34	3316	503
U5243041OZK	11.2-24 12PR	TT	284	1105	122	A6	1500	40	3316	503
U5244011OZK	12.4-24 6PR	TT	315	1160	115	A6	1215	24	3471	525
U5244021OZK	12.4-24 8PR	TT	315	1160	118	A6	1320	29	3471	525
U5244121OZK	320/85-24 8PR	TT	315	1160	118	A6	1320	29	3471	525
U5244041OZK	12.4-24 12PR	TT	315	1160	124	A6	1600	35	3471	525
U5244141OZK	320/85-24 12PR	TT	315	1160	124	A6	1600	35	3471	525
U5245011OZK	13.6-24 6PR	TT	345	1210	120	A6	1400	22	3613	545
U5245021OZK	13.6-24 8PR	TT	345	1210	123	A6	1550	28	3613	545
U5245041OZK	13.6-24 12PR	TT	345	1210	129	A6	1850	34	3613	545
U5246011OZK	14.9-24 6PR	TT	378	1265	125	A6	1650	20	3768	567
U5246021OZK	14.9-24 8PR	TT	378	1265	128	A6	1800	26	3768	567
U5246121OZK	380/85-24 8PR	TT	378	1265	128	A6	1800	26	3768	567
U5246031OZK	14.9-24 10PR	TT	378	1265	131	A6	1950	30	3768	567
U5246131OZK	380/85-24 10PR	TT	378	1265	131	A6	1950	30	3768	567
U5246051OZK	14.9-24 14PR	TT	378	1265	137	A6	2300	38	3768	567
U5248021OZK	16.9-24 8PR	TT	429	1335	133	A6	2060	25	3966	595
U5248031OZK	16.9-24 10PR	TT	429	1335	136	A6	2240	29	3966	595
U5248051OZK	16.9-24 14PR	TT	429	1335	141	A6	2575	35	3966	595
U5247042OZK	15.5/80-24 12PR	TL	394	1260	157	A6	4125	44	3754	565
U5247062OZK	15.5/80-24 16PR	TL	394	1260	163	A6	4875	58	3754	565
U5261031OZK	14.9-26 10PR	TT	378	1315	133	A6	2060	30	3926	592
U5262031OZK	18.4-26 10PR	TT	467	1461	142	A6	2650	26	4338	650
U5262061OZK	18.4-26 16PR	TT	467	1461	153	A6	3650	44	4338	650
U5261051OZK	14.9-26 14PR	TT	378	1315	140	A6	2500	39	3926	592
U5281011OZK	11.2-28 6PR	TT	284	1205	112	A6	1120	26	3630	553
U5281025OZK	11.2-28 8PR	TT	284	1205	118	A6	1320	34	3630	553
U5282011OZK	12.4-28 6PR	TT	315	1260	117	A6	1285	25	3786	575
U5282025OZK	12.4-28 8PR	TT	315	1260	125	A6	1650	30	3786	575
U5282221OZK	320/85-28 8PR	TT	315	1260	125	A6	1650	30	3786	575
U5283011OZK	13.6-28 6PR	TT	345	1310	121	A6	1450	23	3927	595
U5283021OZK	13.6-28 8PR	TT	345	1310	125	A6	1650	29	3927	595



KNK50

REAR TRACTOR TYRES

- High traction
- Easy movement ability with anti-ground feature
- Preventing clusters in the center and sidewalls during movement
- Facilitating releasing of muds thanks to windowed blocks

KNK50

Product Code	Tyre Size & Ply Rating	TT/ TL	Inflated Unloaded Dimension		Load Index	Speed Symbol	Load & Pressure		Dynamic Rolling Circumference	Static Loaded Radius
			Section Width	Overall Diameter			Tyre Load Capacity	Tyre Pressure At Max. Load		
			mm	mm			kg	psi		
U5284011OZK	14.9-28 6PR	TT	378	1365	125	A6	1650	20	4083	617
U5284021OZK	14.9-28 8PR	TT	378	1365	130	A6	1900	26	4083	617
U5284051OZK	14.9-28 14PR	TT	378	1365	143	A6	2725	40	4083	617
U5285021OZK	16.9-28 8PR	TT	429	1435	135	A6	2180	24	4281	645
U5285031OZK	16.9-28 10PR	TT	429	1435	139	A6	2430	29	4281	645
U5285051OZK	16.9-28 14PR	TT	429	1435	143	A6	2725	34	4281	645
U5301021OZK	14.9-30 8PR	TT	378	1415	132	A6	2000	26	4240	642
U5301031OZK	14.9-30 10PR	TT	378	1415	136	A6	2240	29	4240	642
U5302021OZK	16.9-30 8PR	TT	429	1485	137	A6	2300	25	4438	670
U5302031OZK	16.9-30 10PR	TT	429	1485	144	A6	2800	28	4438	670
U5302051OZK	16.9-30 14PR	TT	429	1485	150	A6	3350	34	4438	670
U5302151OZK	420/85-30 14PR	TT	429	1485	150	A6	3350	34	4438	670
U5303021OZK	18.4-30 8PR	TT	467	1550	139	A6	2430	20	4622	696
U5303121OZK	460/85-30 8PR	TT	467	1550	139	A6	2430	20	4622	696
U5303031OZK	18.4-30 10PR	TT	467	1550	145	A6	2900	26	4622	696
U5303131OZK	460/85-30 10PR	TT	467	1550	145	A6	2900	26	4622	696
U5303051OZK	18.4-30 14PR	TT	467	1550	154	A6	3750	40	4622	696
U5303151OZK	460/85-30 14PR	TT	467	1550	154	A6	3750	40	4622	696
U5321025OZK	8.3-32 8PR	TT	211	1195	111	A6	1090	46	3634	559
U5322025OZK	9.5-32 8PR	TT	241	1250	115	A6	1215	39	3790	581
U5323021OZK	12.4-32 8PR	TT	315	1360	125	A6	1650	32	4101	625
U5341031OZK	16.9-34 10PR	TT	429	1585	142	A6	2650	29	4753	720
U5341131OZK	420/85-34 10PR	TT	429	1585	142	A6	2650	29	4753	720
U5341051OZK	16.9-34 14PR	TT	429	1585	148	A6	3150	37	4753	720
U5341151OZK	420/85-34 14PR	TT	429	1585	148	A6	3150	37	4753	720
U5342031OZK	18.4-34 10PR	TT	467	1650	146	A6	3000	26	4937	746
U5342131OZK	460/85-34 10PR	TT	467	1650	146	A6	3000	26	4937	746
U5342051OZK	18.4-34 14PR	TT	467	1650	153	A6	3650	36	4937	746
U5361011OZK	12.4-36 6PR	TT	315	1465	121	A6	1450	24	4429	677
U5361021OZK	12.4-36 8PR	TT	315	1465	126	A6	1700	29	4429	677
U5362011OZK	13.6-36 6PR	TT	345	1515	125	A6	1650	23	4571	697
U5362021OZK	13.6-36 8PR	TT	345	1515	129	A6	1850	29	4571	697
U5381021OZK	12.4-38 8PR	TT	315	1515	127	A6	1750	29	4587	703
U5382021OZK	13.6-38 8PR	TT	345	1565	131	A6	1950	29	4728	723
U5382031OZK	13.6-38 10PR	TT	345	1565	135	A6	2180	33	4728	723
U5383021OZK	14.00-38 8PR	TT	345	1565	131	A6	1950	29	4728	723
U5383031OZK	14.00-38 10PR	TT	345	1565	135	A6	2180	33	4728	723
U5384031OZK	15.5-38 10PR	TT	394	1570	138	A6	2360	33	4742	725
U5384041OZK	15.5-38 12PR	TT	394	1570	141	A6	2575	38	4742	725
U5385031OZK	16.9-38 10PR	TT	429	1685	145	A6	2900	30	5067	771
U5385051OZK	16.9-38 14PR	TT	429	1685	152	A6	3550	40	5067	771
U5386031OZK	18.4-38 10PR	TT	467	1750	147	A6	3075	26	5251	797
U5386051OZK	18.4-38 14PR	TT	467	1750	154	A6	3750	36	5251	797
U5262051OZK	18.4-26 14PR	TT	467	1461	150	A6	3350	40	4338	650



KNK53

REAR TRACTOR TYRES

- High traction
- Easy movement ability with anti-ground feature
- Preventing clusters in the center and sidewalls during movement
- Facilitating releasing of muds thanks to windowed blocks

KNK53	Product Code	Tyre Size & Ply Rating	TT/TL	Inflated Unloaded Dimension		Load Index	Speed Symbol	Load & Pressure		Dynamic Rolling Circumference	Static Loaded Radius
				Section Width	Overall Diameter			Tyre Load Capacity	Tyre Pressure At Max. Load		
				mm	mm			mm	mm		
	U5302221OZK	16.9-30 8PR	TT	429	1485	137	A6	2300	25	4438	670
	U5302231OZK	16.9-30 10PR	TT	429	1485	144	A6	2800	28	4438	670
	U5302241OZK	16.9-30 12PR	TT	429	1485	147	A6	3075	31	4438	670
	U5302251OZK	16.9-30 14PR	TT	429	1485	150	A6	3350	34	4438	670
	U5384141OZK	15.5-38 12PR	TT	394	1570	141	A6	2575	38	4742	725
	U5385131OZK	16.9-38 10PR	TT	429	1685	145	A6	2900	30	5067	771



KNK55

IRRIGATION TYRES

- High traction
- Easy movement ability with anti-ground feature
- Preventing clusters in the center and sidewalls during movement
- Facilitating releasing of muds thanks to windowed blocks

KNK55

Product Code	Tyre Size & Ply Rating	TT/TL	Inflated Unloaded Dimension		Load Index	Speed Symbol	Load & Pressure		Dynamic Rolling Circumference	Static Loaded Radius
			Section Width	Overall Diameter			Tyre Load Capacity	Tyre Pressure At Max. Load		
			mm	mm			kg	psi		
U5243111OZK	11.2-24 6PR (IRRIGATION)	TT	284	1105	110	A6	1060	26	3316	503
U5243121OZK	11.2-24 8PR (IRRIGATION)	TT	284	1105	116	A6	1250	34	3316	503
U5246212OZK	14.9-24 6PR (IRRIGATION)	TL	378	1265	123	A6	1550	20	3768	567
U5246211OZK	14.9-24 6PR (IRRIGATION)	TT	378	1265	123	A6	1550	20	3768	567
U5246221OZK	14.9-24 8PR (IRRIGATION)	TT	378	1265	127	A6	1750	26	3768	567
U5380911OZK	11.2-38 6PR (IRRIGATION)	TT	284	1450	117	A6	1285	19	4403	677
U5380921OZK	11.2-38 8PR (IRRIGATION)	TT	284	1450	122	A6	1500	26	4403	677



KNK36

HARVESTER TYRES

- Easy rolling resistance with five-rib design
- Suitable for both on and off road application
- Designed for field / road transport and soil tillage operations with implement machinery and trailers
- Good flotation properties with a high load capacity at low tire pressure

KNK36

Product Code	Tyre Size & Ply Rating	TT/TL	Inflated Unloaded Dimension		Load Index	Speed Symbol	Load & Pressure		Dynamic Rolling Circumference	Static Loaded Radius
			Section Width	Overall Diameter			Tyre Load Capacity	Tyre Pressure At Max. Load		
			mm	mm			kg	psi		
U4242032OZK	9.00-24 10PR	TL	272	1094	124	B	1600	40	3285	499
U4203052OZK	16.0-70.20 14PR	TL	418	1075	154	A6	3750	51	3099	438



KNK48

HARVESTER TYRES

- Highway, agricultural and off road tyre with high load bearing capacity and low section
- Minimum ground holding feature thanks to wide circumference channels
- Moving forward easily without submerging thanks to its wide tread pattern
- Resistant structure against punctures thanks to increased tread depth

KNK48	Product Code	Tyre Size & Ply Rating	TT/TL	Inflated Unloaded Dimension		Load Index	Speed Symbol	Load & Pressure		Dynamic Rolling Circumference	Static Loaded Radius
				Section Width	Overall Diameter			Tyre Load Capacity	Tyre Pressure At Max. Load		
				mm	mm			mm	mm		
	U4181041OZK	10.5/80-18 12PR	TT	274	885	135/123	A8	2180	65	2646	400
	U4182055OZK	12.5/80-18 14PR	TT	308	965	144/131	A8	2800	63	2872	432
	U4183061OZK	13.0/65-18 16PR	TT	336	890	144/131	A8	2800	71	2660	402



KNK50

HARVESTER TYRES

- High traction
- Easy movement ability with anti-ground feature
- Preventing clusters in the center and sidewalls during movement
- Facilitating releasing of muds thanks to windowed blocks

KNK50	Product Code	Tyre Size & Ply Rating	TT/TL	Inflated Unloaded Dimension		Load Index	Speed Symbol	Load & Pressure		Dynamic Rolling Circumference	Static Loaded Radius
				Section Width	Overall Diameter			Tyre Load Capacity	Tyre Pressure At Max. Load		
				mm	mm			mm	mm		
	U5263072OZK	23.1-26 18PR	TL	587	1605	162	A6	4750	37	4746	708
	U5303261OZK	18.4-30 16PR	TT	467	1550	158	A6	4250	45	4622	696
	U5303361OZK	460/85-30 16PR	TT	467	1550	158	A6	4250	45	4622	696
	U5304072OZK	23.1-30 18PR	TL	587	1715	160	A6	4500	36	5088	762
	U5342061OZK	18.4-34 16PR	TT	467	1650	159	A6	4375	45	4937	746
	U5387061OZK	20.8-38 16PR	TT	528	1840	162	A6	4750	39	5506	833
	U5387062OZK	20.8-38 16PR	TL	528	1840	162	A6	4750	39	5506	833



KNK22

FLOTATION TYRES

- Resistant to stone and impacts thanks to its improved base
- General purposed trailer tyre
- Long lasting and economic use
- Excellent performance in highway and land
- Mud-repellent feature thanks to its special pattern, enhanced traction

KNK22	Product Code	Tyre Size & Ply Rating	TT/TL	Inflated Unloaded Dimension		Load Index	Speed Symbol	Load & Pressure		Dynamic Rolling Circumference	Static Loaded Radius
				Section Width	Overall Diameter			Tyre Load Capacity	Tyre Pressure At Max. Load		
				mm	mm			kg	psi		
	U4202051OZK	9.00-20 14PR	TT	247	1017	133	A6	2060	81	3035	458



KNK25

FLOTATION TYRES

- Resistance to stone and impacts thanks to its improved base
- General purpose trailer tyre
- Long lasting and economic use
- Excellent performance in highway and land
- Mud-repellent feature thanks to its special pattern, enhanced traction

KNK25	Product Code	Tyre Size & Ply Rating	TT/TL	Inflated Unloaded Dimension		Load Index	Speed Symbol	Load & Pressure		Dynamic Rolling Circumference	Static Loaded Radius
				Section Width	Overall Diameter			Tyre Load Capacity	Tyre Pressure At Max. Load		
				mm	mm			kg	psi		
	U4161041OZK	7.50-16 12PR	TT	214	787	121	A8	1450	72	2353	355
	U4201051OZK	8.25-20 14PR	TT	234	970	133	A6	2060	90	2902	439



KNK26

FLOTATION TYRES

- Resistant to stone and impacts thanks to its improved base
- General purposed trailer tyre
- Long lasting and economic use
- Excellent performance in highway and land
- Mud-repellent feature thanks to its special pattern, enhanced traction

KNK26	Product Code	Tyre Size & Ply Rating	TT/TL	Inflated Unloaded Dimension		Load Index	Speed Symbol	Load & Pressure		Dynamic Rolling Circumference	Static Loaded Radius
				Section Width	Overall Diameter			Tyre Load Capacity	Tyre Pressure At Max. Load		
				mm	mm			kg	psi		
	U4162045OZK	9.00-16 12PR	TT	247	865	125	A6	1650	58	2573	387
	U4162051OZK	9.00-16 14PR	TT	247	865	128	A6	1800	67	2573	387



KNK27

FLOTATION TYRES

- Balanced driving and excellent traction thanks to its special design
- Increased water and mud discharge thanks to surrounded gutters
- Strong frame structure and high wear resistance
- Comfortable driving
- Retreadability feature

KNK27	Product Code	Tyre Size & Ply Rating	TT/TL	Inflated Unloaded Dimension		Load Index	Speed Symbol	Load & Pressure		Dynamic Rolling Circumference	Static Loaded Radius
				Section Width	Overall Diameter			Tyre Load Capacity	Tyre Pressure At Max. Load		
				mm	mm			kg	psi		
	U4162141OZK	9.00-16 12PR	TT	247	865	125	A6	1650	58	2573	387
	U4162151OZK	9.00-16 14PR	TT	247	865	128	A6	1800	67	2573	387



KNK28

FLOTATION TYRES

- Convenient to use in asphalt and land thanks to back pattern
- Durable sidewall with strong structure
- Soil holding feature with complex tread structure and channels
- Providing straight location to the ground thanks to back design

KNK28	Product Code	Tyre Size & Ply Rating	TT/TL	Inflated Unloaded Dimension		Load Index	Speed Symbol	Load & Pressure		Dynamic Rolling Circumference	Static Loaded Radius
				Section Width	Overall Diameter			Tyre Load Capacity	Tyre Pressure At Max. Load		
				mm	mm			kg	psi		
	U4161141OZK	7.50-16 12PR	TT	214	787	121	A8	1450	72	2353	355



KNK42

FLOTATION TYRES

- High load bearing capacity with strong structure and less soil compression with its wide base
- Anti-ground tread design

KNK42	Product Code	Tyre Size & Ply Rating	TT/TL	Inflated Unloaded Dimension		Load Index	Speed Symbol	Load & Pressure		Dynamic Rolling Circumference	Static Loaded Radius
				Section Width	Overall Diameter			Tyre Load Capacity	Tyre Pressure At Max. Load		
				mm	mm			kg	psi		
	U4153442OZK	260/70-15.3 (10.0/75-15.3) 12PR	TL	268	753	126	A8	1700	52	2251	340
	U4153552OZK	300/80-15.3 (11.5/80-15.3) 14PR	TL	295	869	141	A8	2575	58	2579	386
	U4153052OZK	12.5/80-15.3 14PR	TL	307	889	142	A8	2650	62	2636	394



KNK46

FLOTATION TYRES

- Soil tillage, transport and hay harvesting applications with implement machinery, trailers and hay harvesters/balers
- The special tread compound resulting in exceptional cut and strong tread along with excellent wear resistance on all types of terrains

KNK46	Product Code	Tyre Size & Ply Rating	TT/TL	Inflated Unloaded Dimension		Load Index	Speed Symbol	Load & Pressure		Dynamic Rolling Circumference	Static Loaded Radius
				Section Width	Overall Diameter			Tyre Load Capacity	Tyre Pressure At Max. Load		
				mm	mm			kg	psi		
	U4173052OZK	500/50-17 14PR	TL	503	932	149	A8	3250	41	2771	416
	U4173072OZK	500/50-17 18PR	TL	503	932	157	A8	4125	70	2771	416



KNK48

FLOTATION TYRES

- Highway, agricultural and off road tyre with high load bearing capacity and low section
- Minimum ground holding feature thanks to wide circumference channels
- Moving forward easily without submerging thanks to its wide tread pattern
- Resistant structure against punctures thanks to increased tread depth

KNK48	Product Code	Tyre Size & Ply Rating	TT/TL	Inflated Unloaded Dimension		Load Index	Speed Symbol	Load & Pressure		Dynamic Rolling Circumference	Static Loaded Radius
				Section Width	Overall Diameter			Tyre Load Capacity	Tyre Pressure At Max. Load		
				mm	mm			kg	psi		
	U4151042OZK	10.0/75-15.3 (260/70-15.3) 12PR	TL	264	760	126	A8	1700	68	2271	343
	U4151052OZK	10.0/75-15.3 (260/70-15.3) 14PR	TL	264	760	130	A8	1900	80	2271	343
	U4152052OZK	11.5/80-15.3 (300/80-15.3) 14PR	TL	290	845	139	A8	2430	69	2511	377
	U4153152OZK	12.5/80-15.3 (320/80-15.3) 14PR	TL	307	889	142	A8	2650	62	2636	394
	U4163041OZK	10.5/65-16 (265/65-16) 12PR	TT	274	755	126	A8	1700	65	2262	343



KNK52

FLOTATION TYRES

- High load bearing capacity with low section off road and agricultural tyre
- Holding features for dry and wet grounds thanks to its pattern

KNK52	Product Code	Tyre Size & Ply Rating	TT/TL	Inflated Unloaded Dimension		Load Index	Speed Symbol	Load & Pressure		Dynamic Rolling Circumference	Static Loaded Radius
				Section Width	Overall Diameter			Tyre Load Capacity	Tyre Pressure At Max. Load		
				mm	mm			kg	psi		
	U4151142OZK	10.0/75-15.3 12PR	TL	264	760	126	A8	1700	68	2271	343
	U4152152OZK	11.5/80-15.3 14PR	TL	290	845	139	A8	2430	69	2511	377
	U4153252OZK	12.5/80-15.3 14PR	TL	307	889	142	A8	2650	62	2636	394



KNK56

FLOTATION TYRES

- Extra strong against stretching thanks to strong frame structure
- Flexibility and deep tread profile

KNK56	Product Code	Tyre Size & Ply Rating	TT/TL	Inflated Unloaded Dimension		Load Index	Speed Symbol	Load & Pressure		Dynamic Rolling Circumference	Static Loaded Radius
				Section Width	Overall Diameter			Tyre Load Capacity	Tyre Pressure At Max. Load		
				mm	mm			kg	psi		
	U4153362OZK	12.5/80-15.3 16PR	TL	307	889	144	A8	2800	71	2636	394
	U4153672OZK	400/60-15.5 18PR	TL	404	874	151	A8	3450	90	2595	389
	U4221062OZK	550/60-22.5 16PR	TL	543	1244	154	A8	3750	41	3697	555



KNK42

IMPLEMENT TYRES

- *Low rolling resistance*
- *High comfort*
- *Preventing skidding thanks to its special pattern*
- *Low soil compact feature thanks to its wide base*

KNK42	Product Code	Tyre Size & Ply Rating	TT/TL	Inflated Unloaded Dimension		Load Index	Speed Symbol	Load & Pressure		Dynamic Rolling Circumference	Static Loaded Radius
				Section Width	Overall Diameter			Tyre Load Capacity	Tyre Pressure At Max. Load		
				mm	mm			kg	psi		
	U1124032OZK	10.0/80-12 10PR	TL	261	671	116	A8	1250	57	1993	299



KNK48

IMPLEMENT TYRES

- *High tread depth*
- *Low rolling resistance*
- *High comfort*
- *Low soil compact feature thanks to its wide base*

KNK48	Product Code	Tyre Size & Ply Rating	TT/TL	Inflated Unloaded Dimension		Load Index	Speed Symbol	Load & Pressure		Dynamic Rolling Circumference	Static Loaded Radius
				Section Width	Overall Diameter			Tyre Load Capacity	Tyre Pressure At Max. Load		
				mm	mm			kg	psi		
	U1124132OZK	10.0/80-12 10PR	TL	264	710	116	A8	1250	57	2103	314



KNK50

IMPLEMENT TYRES

- High traction
- Easy movement ability with anti-ground feature
- Preventing clusters in the center and sidewalls during movement
- Facilitating releasing of muds thanks to windowed blocks

KNK50	Product Code	Tyre Size & Ply Rating	TT/TL	Inflated Unloaded Dimension		Load Index	Speed Symbol	Load & Pressure		Dynamic Rolling Circumference	Static Loaded Radius
				Section Width	Overall Diameter			Tyre Load Capacity	Tyre Pressure At Max. Load		
				mm	mm			kg	psi		
	U1152011OZK	6.50/80-15 6PR	TT	163	663	96	A6	710	52	1994	303



KNK52

IMPLEMENT TYRES

- High load bearing capacity with low section off road and agricultural tyre
- Holding features for dry and wet grounds thanks to its pattern

KNK52	Product Code	Tyre Size & Ply Rating	TT/TL	Inflated Unloaded Dimension		Load Index	Speed Symbol	Load & Pressure		Dynamic Rolling Circumference	Static Loaded Radius
				Section Width	Overall Diameter			Tyre Load Capacity	Tyre Pressure At Max. Load		
				mm	mm			kg	psi		
	U1121001OZK	5.00-12 4PR	TT	145	580	62	A6	265	32	1736	262
	U1123011OZK	7.00-12 6PR	TT	200	683	83	A6	487	36	2027	304
	U1131011OZK	6.50/80-13 6PR	TT	170	640	82	A6	475	52	1913	289



KNK54

IMPLEMENT TYRES

- High traction ability thanks to its angle blocks
- Easy movement ability thanks to anti-ground base design
- Preventing clusters in the center and sidewalls during movement of tractor thanks to its open design in center
- Facilitating releasing of muds thanks to windowed blocks

KNK54

Product Code	Tyre Size & Ply Rating	TT/TL	Inflated Unloaded Dimension		Load Index	Speed Symbol	Load & Pressure		Dynamic Rolling Circumference	Static Loaded Radius
			Section Width	Overall Diameter			Tyre Load Capacity	Tyre Pressure At Max. Load		
			mm	mm			kg	psi		
U1122011OZK	6.50/80-12 6PR	TT	163	588	80	A6	450	52	1758	266



KNK140

IMPLEMENT TYRES

- Proper use in lands and gardens
- Strong and robust structure
- Preventing skidding thanks to its special pattern
- Long lasting and economic use
- Optimum performance with small-type gardening and agriculture vehicles

KNK140

Product Code	Tyre Size & Ply Rating	TT/TL	Inflated Unloaded Dimension		Load Index	Speed Symbol	Load & Pressure		Dynamic Rolling Circumference	Static Loaded Radius
			Section Width	Overall Diameter			Tyre Load Capacity	Tyre Pressure At Max. Load		
			mm	mm			kg	psi		
U1151011OZK	5.00-15 6PR	TT	145	655	76	A6	400	50	1972	300



FRS40

FORESTRY TYRES

- Specially designed for forestry application
- Special tread and sidewall compound provides maximum tyre life against cut and crack resistance
- Excellent puncture resistance thanks to strong breaker construction shoulder to shoulder,
- Lower lug angle providing excellent grip and self cleaning properties for logging operations
- Tie-bar on the central lugs protects the tire against deep impacts.

FRS40	Product Code	Tyre Size & Ply Rating	TT/TL	Inflated Unloaded Dimension		Load Index	Speed Symbol	Load & Pressure		Dynamic Rolling Circumference	Static Loaded Radius
				Section Width	Overall Diameter			Tyre Load Capacity	Tyre Pressure At Max. Load		
				mm	mm			kg	psi		
	U5262262OZK	18.4-26 16PR	TL	467	1461	153	A6	3650	44	4338	650





örka

**NO
MORE
RISK!**

**RESISTANCE TO ANY KIND OF
HARSH CONDITIONS!**

ÖZKA

INDUSTRIAL EM, OTR TYRES

OR71 KNK44 KNK65 KNK66

IND80 IND85 IND88

KNK70 KNK72 KNK74

KNK77 KNK88 KNK40





OR71

RADIAL EM TYRES

- High traction and comfort
- Longer service life
- Comfortable drive due to flexible sidewall structure
- Strong carcass structure
- Resistance to fatigue due to wide shoulder and blocks
- Strong tread compound for cut-resistance
- High performance due to wide base track
- Mud repellent feature due to specially designed tread pattern

OR71	Product Code	Tyre Size	TT/TL	Inflated Unloaded Dimension		Load Index	Speed Symbol	Load & Pressure		Dynamic Rolling Circumference	Static Loaded Radius
				Section Width	Overall Diameter			Tyre Load Capacity	Tyre Pressure At Max. Load		
				mm	mm			mm	mm		
	UR7024460712OZK	460/70 R24	TL	455	1255	159/159	A8/B	4375/4375	58	3740	563
	UR8024440712OZK	440/80 R24	TL	450	1320	154/154	A8/B	3750/3750	46	3924	589
	UR8028440712OZK	440/80 R28	TL	450	1420	156/156	A8/B	4000/4000	46	4238	639



KNK44

EM / INDUSTRIAL TYRES

- Resistance to stone cuts, cracks and breaks
- Long wear-life

KNK44	Product Code	Tyre Size & Ply Rating	TT/TL	Inflated Unloaded Dimension		Load Index	Speed Symbol	Load & Pressure		Dynamic Rolling Circumference	Static Loaded Radius
				Section Width	Overall Diameter			Tyre Load Capacity	Tyre Pressure At Max. Load		
				mm	mm			mm	mm		
	U6202065OZK	10.00-20 16PR	TT	283	1084	146 / 143	B	3000	109	3225	484
	U6202062OZK	10.00-20 16PR	TL	283	1084	146 / 143	B	3000	109	3225	484



KNK65

**EM / INDUSTRIAL
TYRES**

- Long wear-life
- Cracking / fatigue resistance at treads
- Maximum traction
- Increased sidewall protection

KNK65	Product Code	Tyre Size & Ply Rating	TT/TL	Inflated Unloaded Dimension		Load Index	Speed Symbol	Load & Pressure		Dynamic Rolling Circumference	Static Loaded Radius
				Section Width	Overall Diameter			Tyre Load Capacity	Tyre Pressure At Max. Load		
				mm	mm			kg	psi		
	U6161042OZK	10-16.5 12PR	TL	282	775	138	A3	2360	84	2323	352
	U6162052OZK	12-16.5 14PR	TL	320	846	148	A3	3150	90	2524	380



KNK66

**EM / INDUSTRIAL
TYRES**

- High traction and comfort
- Designed compatible with scrap operations and recycling process
- Excellent maneuverability at high tonnage due to reinforced shoulder blocks
- Comfortable drive due to flexible sidewall structure
- Reinforced back structure
- Longer life due to improved back structure
- Wear resistance due to special back combination

KNK66	Product Code	Tyre Size & Ply Rating	TT/TL	Inflated Unloaded Dimension		Load Index	Speed Symbol	Load & Pressure		Dynamic Rolling Circumference	Static Loaded Radius
				Section Width	Overall Diameter			Tyre Load Capacity	Tyre Pressure At Max. Load		
				mm	mm			kg	psi		
	U6161142OZK	10-16.5 12PR	TL	282	775	138	A3	2360	84	2323	352
	U6162152OZK	12-16.5 14PR	TL	320	846	148	A3	3150	90	2524	380
	U6182052OZK	12.5/80-18 14PR	TL	305	983	146	A8	3000	62	2923	439



IND80

EM / INDUSTRIAL TYRES

- High traction and excellent self-cleaning feature in any conditions thanks to deep and corrugated tread structure
- Resistance to stone cuts, cracks and breaks
- Higher wear and root resistance thanks to using bar in the center
- Resistance to any kind of impacts
- Long wear-life

IND80

Product Code	Tyre Size & Ply Rating	TT/TL	Inflated Unloaded Dimension		Load Index	Speed Symbol	Load & Pressure		Dynamic Rolling Circumference	Static Loaded Radius
			Section Width	Overall Diameter			Tyre Load Capacity	Tyre Pressure At Max. Load		
			mm	mm			kg	psi		
U6161242OZK	10-16.5 12PR	TL	256	793	138	A3	2360	84	2374	359
U6162252OZK	12-16.5 14PR	TL	297	858	148	A3	3150	90	2558	385
U6181042OZK	10.5/80-18 12PR	TL	271	892	135	A8	2180	62	2666	403
U6182152OZK	12.5/80-18 14PR	TL	285	955	146	A8	3000	62	2844	428
U6207062OZK	16.0/70-20 16PR	TL	385	1091	166	A2	5300	65	3244	487
U6207162OZK	405/70-20 16PR	TL	385	1091	166	A2	5300	65	3244	487
U6243062OZK	15.5/80-24 16PR	TL	412	1269	162	A8	4750	72	3780	569
U6245062OZK	16.0/70-24 16PR	TL	418	1200	169	A2	5800	65	3584	541
U6245162OZK	405/70-24 16PR	TL	418	1200	169	A2	5800	65	3584	541
U6246062OZK	16.9-24 16PR	TL	429	1310	154	A8	3750	46	3895	585
U6246162OZK	440/80-24 16PR	TL	429	1310	154	A8	3750	46	3895	585
U6247052OZK	17.5L-24 14PR	TL	475	1277	154	A8	3750	46	3802	572
U6248052OZK	19.5L-24 14PR	TL	495	1314	154	A8	3750	38	3907	587
U6251052OZK	15.5-25 14PR	TL	400	1286	173	A2	6500	68	3836	578
U6261052OZK	18.4-26 14PR	TL	467	1425	160	A8	4500	42	4237	636
U6281052OZK	16.9-28 14PR	TL	429	1410	156	A8	4000	43	4210	635
U6281152OZK	440/80-28 14PR	TL	429	1410	156	A8	4000	43	4210	635
U6301062OZK	16.9-30 16PR	TL	418	1466	156	A8	4000	47	4384	663



IND85

EM / INDUSTRIAL TYRES

- High traction and comfort
- Resistance to any kind of impacts with its back structure
- Comfortable drive due to flexible sidewall structure
- Reinforced bead design
- Reinforced sidewall structure
- Excellent maneuverability at high tonnage due to flexible sidewall structure
- Longer life with its reinforced tread pattern
- Strong tread compound against punctures and impacts
- Longer life due to increased tread number and improved tread depth

IND85	Product Code	Tyre Size & Ply Rating	TT/TL	Inflated Unloaded Dimension		Load Index	Speed Symbol	Load & Pressure		Dynamic Rolling Circumference	Static Loaded Radius
				Section Width	Overall Diameter			Tyre Load Capacity	Tyre Pressure At Max. Load		
				mm	mm			kg	psi		
	U6182252OZK	12.5/80-18 14PR	TL	304	965	146	A8	3000	62	2872	432



IND88

EM / INDUSTRIAL TYRES

- Robust industrial pattern with higher resistance to puncture and tread wear
- Higher traction with wide pattern design at the center lug
- Reinforced bead design

IND88	Product Code	Tyre Size & Ply Rating	TT/TL	Inflated Unloaded Dimension		Load Index	Speed Symbol	Load & Pressure		Dynamic Rolling Circumference	Static Loaded Radius
				Section Width	Overall Diameter			Tyre Load Capacity	Tyre Pressure At Max. Load		
				mm	mm			kg	psi		
	U6182352OZK	12.5/80-18 14PR	TL	308	987	146	A8	3000	62	2934	441
	U6183052OZK	340/80-18 14PR	TL	343	1001	146	A8	3000	62	2974	446
	U6207262OZK	16.0/70-20 16PR	TL	385	1091	166	A2	5300	65	3244	487
	U6206052OZK	14.5-20 14PR	TL	355	1095	143	D	2725	51	3256	489



KNK70

EM / INDUSTRIAL TYRES

- Strong and durable thanks to excellent design
- Its compound resistant to wear, and its blocks resistant to heavy conditions with long maintenance periods
- Minimizing stretching at base with its strong blocks in its center

KNK70

Product Code	Tyre Size & Ply Rating	TT/TL	Inflated Unloaded Dimension		Load Index	Speed Symbol	Load & Pressure		Dynamic Rolling Circumference	Static Loaded Radius
			Section Width	Overall Diameter			Tyre Load Capacity	Tyre Pressure At Max. Load		
			mm	mm			kg	psi		
U6242002OZK	14.00-24 24PR	TL	375	1360	186	A2	9500	123	4037	605
U6242042OZK	14.00-24 32PR	TL	375	1360	190	A2	10600	145	4037	605
U6251062OZK	15.5-25 16PR	TL	384	1261	175	A2	6900	72	3765	568
U6252082OZK	17.5-25 20PR	TL	455	1371	181	A2	8250	83	4076	612
U6254002OZK	20.5-25 24PR	TL	531	1527	189	A2	10300	76	4517	674
U6255002OZK	23.5-25 24PR	TL	604	1625	196	A2	12500	68	4794	714
U6256022OZK	26.5-25 28PR	TL	702	1785	203	A2	15500	68	5246	778
U6256042OZK	26.5-25 32PR	TL	702	1785	206	A2	17000	79	5246	778
U6257042OZK	29.5-25 32PR	TL	758	1923	210	A2	19000	72	5637	833



KNK72

EM / INDUSTRIAL TYRES

- High traction and excellent self-cleaning feature in any conditions thanks to deep and corrugated tread structure
- Resistance to stone cuts, cracks and breaks
- Higher wear and root resistance thanks to using bar in the center
- Resistance to any kind of impacts
- Long wear-life

KNK72

Product Code	Tyre Size & Ply Rating	TT/TL	Inflated Unloaded Dimension		Load Index	Speed Symbol	Load & Pressure		Dynamic Rolling Circumference	Static Loaded Radius
			Section Width	Overall Diameter			Tyre Load Capacity	Tyre Pressure At Max. Load		
			mm	mm			kg	psi		
U6241062OZK	13.00-24 16PR	TL	335	1280	151	A8	3450	58	3811	573
U6242062OZK	14.00-24 16PR	TL	382	1354	153	A8	3650	54	4020	603



KNK74

EM / INDUSTRIAL TYRES

- Strong structure
- Increased tread depth and tread pattern providing optimum traction in muddy fields

KNK74

Product Code	Tyre Size & Ply Rating	TT/TL	Inflated Unloaded Dimension		Load Index	Speed Symbol	Load & Pressure		Dynamic Rolling Circumference	Static Loaded Radius
			Section Width	Overall Diameter			Tyre Load Capacity	Tyre Pressure At Max. Load		
			mm	mm			kg	psi		
U6244062OZK	16.00-24 16PR	TL	432	1493	160	A8	4500	47	4413	658



KNK77

COMPACTOR TYRES

- Wide shoulder and base width, blocked design
- High traction ability
- Anti-wear future thanks to its pattern appropriate for agricultural, industrial and off road use
- Consisting durable blocks
- Easy use in soft grounds
- Balanced driving and easy control thanks to wide shoulder and blocks

KNK77

Product Code	Tyre Size & Ply Rating	TT/TL	Inflated Unloaded Dimension		Load Index	Speed Symbol	Load & Pressure		Dynamic Rolling Circumference	Static Loaded Radius
			Section Width	Overall Diameter			Tyre Load Capacity	Tyre Pressure At Max. Load		
			mm	mm			kg	psi		
U6262052OZK	23.1-26 14PR	TL	587	1580	166	A8	5300	33	4675	698



KNK88

COMPACTOR TYRES

- *Compressing ability for asphalt with its plane surfaced tread pattern*
- *Stable operation feature thanks to strong frame at sidewalls*

KNK88	Product Code	Tyre Size & Ply Rating	TT/TL	Inflated Unloaded Dimension		Load Index	Speed Symbol	Load & Pressure		Dynamic Rolling Circumference	Static Loaded Radius
				Section Width	Overall Diameter			Tyre Load Capacity	Tyre Pressure At Max. Load		
				mm	mm			kg	psi		
	U6201041OZK	9.00-20 12 PR	TT	256	1002	157	A2	4125	94	2993	452
	U6203061OZK	11.00-20 16 PR	TT	290	1040	168	A2	5600	107	3100	467

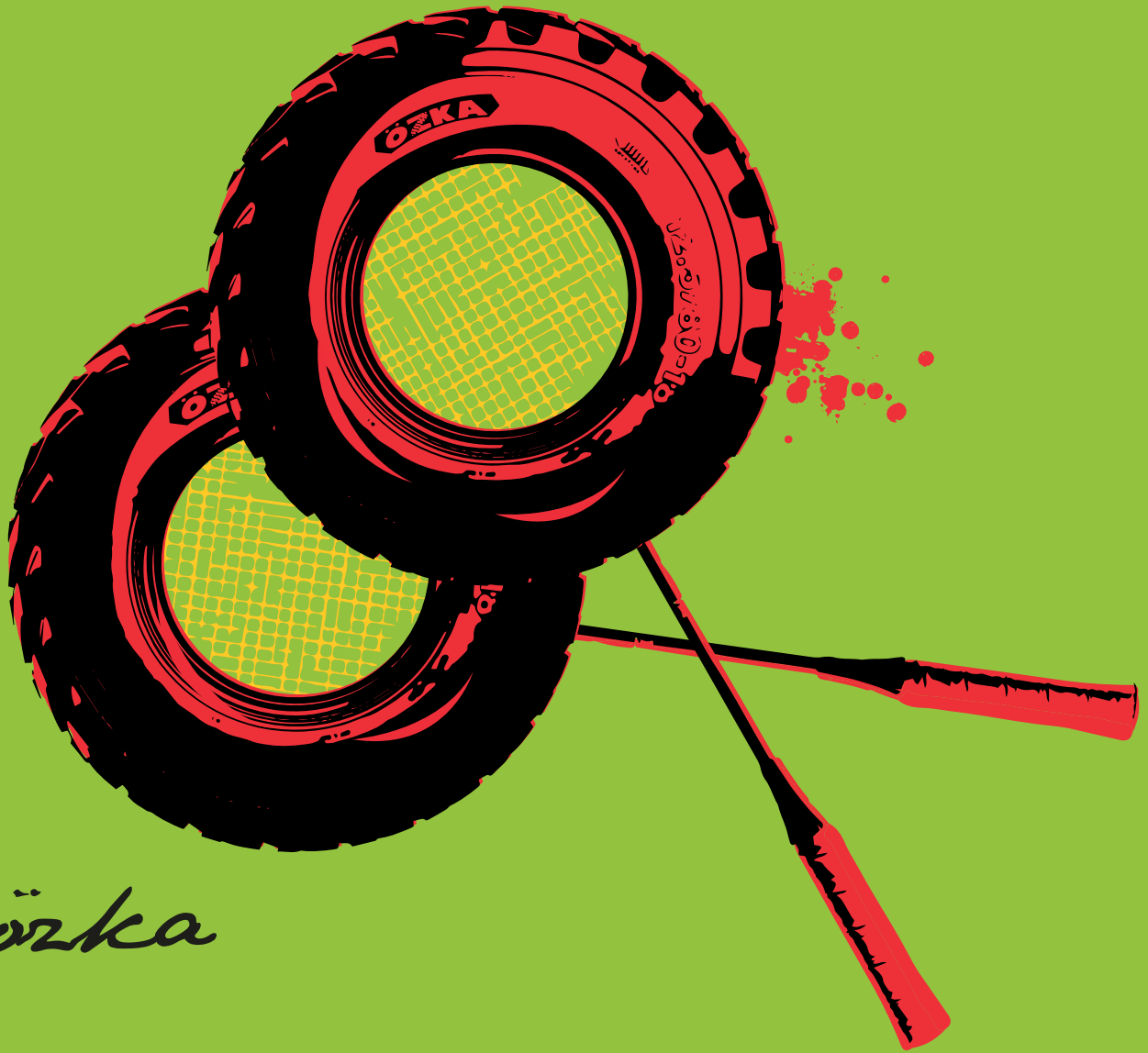


KNK40

FORKLIFT TYRES

- *High kilometer performance thanks to its special structure*
- *Comfortable driving thanks to excellent traction*
- *Maximum traction*
- *Long wear-life*
- *Resistance to any kind of impacts*

KNK40	Product Code	Tyre Size & Ply Rating	TT/TL	Inflated Unloaded Dimension		Load Index	Speed Symbol	Load & Pressure		Dynamic Rolling Circumference	Static Loaded Radius
				Section Width	Overall Diameter			Tyre Load Capacity	Tyre Pressure At Max. Load		
				mm	mm			kg	psi		
	U6091041OZK	6.00-9 12PR	TT	165	544	121	A5	1450	145	1610	240
	U6101041OZK	6.50-10 12PR	TT	181	592	125	A5	1650	110	1754	262
	U6121051OZK	7.00-12 14PR	TT	195	674	134	A5	2120	110	2001	300
	U6151051OZK	8.15-15 (28X9-15) 14PR	TT	220	710	146	A5	3000	145	2127	322
	U6152071OZK	8.25-15 18PR	TT	240	840	153	A5	3650	145	2495	374



özka

MANEUVERABILITY IS THE POINT!

**EXCELLENT MANEUVERABILITY
WITH FLEXIBLE SIDEWALL STRUCTURE!**

ÖZKA

LCV TYRES

KNK20

KNK24

KNK25

KNK126



özka



KNK20

LIGHT TRUCK & MINIBUS TYRES

- Strong frame structure and high wear resistance
- Balanced driving thanks to its corrugated pattern
- Increased water discharge thanks to its corrugated gutters
- Increased road bend ability and excellent traction
- Retreadability feature

KNK20	Product Code	Tyre Size & Ply Rating	TT/TL	Inflated Unloaded Dimension		Load Index	Speed Symbol	Load & Pressure		Dynamic Rolling Circumference	Static Loaded Radius
				Section Width	Overall Diameter			Load Capacity Per Axle	Tyre Pressure At Max. Load		
				mm	mm			kg	psi		
	U2141031OZK	6.50-14 10 PR	TT	171	647	100/98	L	800/750*	72	1918	287
	U2151031OZK	7.50-15 10PR	TT	235	789	114/112	L	1180/1120*	76	2318	344
	U2161031OZK	6.50-16 10PR	TT	176	748	108/107	L	1000/975*	73	2216	331
	U2162031OZK	7.00-16 10PR	TT	198	785	113/112	L	1150/1120*	76	2317	345
	U2163041OZK	7.50-16 12PR	TT	210	810	121/120	L	1450/1400*	94	2386	355



KNK24

LIGHT TRUCK & MINIBUS TYRES

- Balanced driving and excellent traction thanks to its special corrugated pattern
- Increased water and mud resistance thanks to its surrounding gutters
- Strong frame structure and high wear resistance
- Comfortable driving
- Retreadability feature

KNK24	Product Code	Tyre Size & Ply Rating	TT/TL	Inflated Unloaded Dimension		Load Index	Speed Symbol	Load & Pressure		Dynamic Rolling Circumference	Static Loaded Radius
				Section Width	Overall Diameter			Load Capacity Per Axle	Tyre Pressure At Max. Load		
				mm	mm			kg	psi		
	U2163141OZK	7.50-16 12PR	TT	210	810	121/120	L	1450/1400*	94	2386	355



KNK25

LIGHT TRUCK & MINIBUS TYRES

- Optimum performance in traction and brakes due to special deep back pattern
- Strong frame structure and high wear resistance
- Anti-stone increased water and mud resistance thanks to its surrounding gutters
- Retreadability feature

KNK25	Product Code	Tyre Size & Ply Rating	TT/TL	Inflated Unloaded Dimension		Load Index	Speed Symbol	Load & Pressure		Dynamic Rolling Circumference	Static Loaded Radius
				Section Width	Overall Diameter			Load Capacity Per Axle	Tyre Pressure At Max. Load		
				mm	mm			kg	psi		
	U2163241OZK	7.50-16 12PR	TT	210	810	121/120	L	1450/1400*	94	2386	355



KNK126

LIGHT TRUCK & MINIBUS TYRES

- Balanced driving and excellent traction thanks to its special corrugated pattern
- Increased water and mud resistance thanks to its surrounding gutters
- Strong frame structure and high wear resistance
- Comfortable driving
- Retreadability feature

KNK126	Product Code	Tyre Size & Ply Rating	TT/TL	Inflated Unloaded Dimension		Load Index	Speed Symbol	Load & Pressure		Dynamic Rolling Circumference	Static Loaded Radius
				Section Width	Overall Diameter			Load Capacity Per Axle	Tyre Pressure At Max. Load		
				mm	mm			kg	psi		
	U2151131OZK	7.50-15 10PR	TT	235	786	114/112	L	1180/1120*	76	2310	342
	U2161131OZK	6.50-16 10PR	TT	176	748	108/107	L	1000/975*	73	2216	331
	U2162131OZK	7.00-16 10PR	TT	198	785	113/112	L	1150/1120*	76	2317	345
	U2163341OZK	7.50-16 12PR	TT	210	810	121/120	L	1450/1400*	94	2386	355

*Load Capacity per tyre on single axle with single tyre / Load capacity per tyre on single axle with dual tyres.

ÖZKA

MPT TYRES

KNK10 KNK12 KNK14



özka



KNK10

MILITARY TYRES

- Wide base, designed for use at asphalt and off road (land)
- Self-cleaning tread structure in asphalt use
- Suitable for any weather conditions, excellent traction
- High drift endurance due to diagonal tread structure

KNK10	Product Code	Tyre Size & Ply Rating	TT/TL	Inflated Unloaded Dimension		Load Index	Speed Symbol	Load & Pressure		Dynamic Rolling Circumference	Static Loaded Radius
				Section Width	Overall Diameter			Tyre Load Capacity	Tyre Pressure At Max. Load		
				mm	mm			kg	psi		
	U6205071OZK	14.00-20 18PR	TT	375	1260	160/157	F	4500/4125*	100	3722	555
	U6205081OZK	14.00-20 20PR	TT	375	1260	161/158	F	4625/4250*	108	3690	545



KNK12

MILITARY TYRES

- Pattern feature designed for non-road and highway use
- Excellent maneuverability due to nondirectional use feature

KNK12	Product Code	Tyre Size & Ply Rating	TT/TL	Inflated Unloaded Dimension		Load Index	Speed Symbol	Load & Pressure		Dynamic Rolling Circumference	Static Loaded Radius
				Section Width	Overall Diameter			Tyre Load Capacity	Tyre Pressure At Max. Load		
				mm	mm			kg	psi		
	U6204041OZK	12.5-20 12PR	TT	325	1040	132	F	2000	51	3100	467
	U6204152OZK	12.5-20 14PR	TL	325	1040	137	A8	2300	51	3100	467



KNK14

MILITARY TYRES

- Military tyre for both off the road and highway application
- More resistance with multilayer carcass body across puncture
- Self-cleaning lug design

KNK14	Product Code	Tyre Size & Ply Rating	TT/TL	Inflated Unloaded Dimension		Load Index	Speed Symbol	Load & Pressure		Dynamic Rolling Circumference	Static Loaded Radius
				Section Width	Overall Diameter			Tyre Load Capacity	Tyre Pressure At Max. Load		
				mm	mm			kg	psi		
	U6184021OZK	13.00-18 8PR	TT	354	1125	131	F	1950	43	3324	496

TOGETHER WE DESIGN THE FUTURE!

özka

AS ÖZKA FAMILY, WE ALL WORK HARD
IN THE OFFICE, FACTORY, FARMS AND
CONSTRUCTION SITES TO BUILD
THE FUTURE TOGETHER!



RIM DIAMETER	EQUIVALENCE TABLE OF INTERCHANGEABILITY FOR RADIAL AND DIAGONAL TYRES									
16	6.00 # 16	210/80 # 16	240/70 # 16	260/65 # 16						
16	6.50 # 16	260/70 # 16	280/65 # 16							
16	7.50 # 16	210/95 # 16	250/80 # 16	280/70 # 16	300/65 # 16	320/65 # 16				
16	8.25 # 16	300/70 # 16								
18	7.50 # 18	210/95 # 18	250/80 # 18	280/70 # 18	300/65 # 18	320/65 # 18				
18	10.5/80 # 18	300/70 # 18	340/65 # 18							
20	7.50 # 20	280/70 # 20								
20	9.5 # 20	8.00 # 20	250/85 # 20	260/80 # 20	300/70 # 20	340/65 # 20				
20	11.2 # 20	280/85 # 20	320/70 # 20							
20	12.4 # 20	320/85 # 20	340/80 # 20	340/75 # 20	360/70 # 20	420/65 # 20				
20	13.6 # 20	14.9L # 20	380/75 # 20	400/70 # 20	380/70 # 20	440/65 # 20				
20	12.4 # 28	320/85 # 28	360/70 # 28	420/65 # 28						
24	9.5 # 24	240/85 # 24	250/85 # 24	300/70 # 24	360/60 # 24					
24	11.2 # 24	280/85 # 24	320/70 # 24							
24	12.4 # 24	320/85 # 24	360/70 # 24	420/65 # 24						
24	13.6 # 24	340/85 # 24	380/75 # 24	380/70 # 24	400/70 # 24	440/65 # 24				
24	14.9 # 24	380/85 # 24	420/70 # 24	460/70 # 24	480/65 # 24					
24	16.9 # 24	420/85 # 24	480/70 # 24	480/75 # 24	540/65 # 24					
26	16.9 # 26	480/70 # 26	540/65 # 26							
26	18.4 # 26	460/85 # 26	520/70 # 26	580/70 # 26	750/50 # 26					
26	23.1 # 26	28 L # 26	620/75 # 26	650/70 # 26	750/65 # 26					
28	9.5 # 28	240/85 # 28	250/85 # 28	340/65 # 28						
28	11.2 # 28	280/85 # 28	320/70 # 28							
28	13.6 # 28	340/85 # 28	380/70 # 28	440/65 # 28	480/60 # 28					
28	14.9 # 28	380/85 # 28	420/70 # 28	420/75 # 28	480/65 # 28	520/60 # 28				
28	16.9 # 28	420/85 # 28	480/70 # 28	480/75 # 28	540/65 # 28	600/60 # 28				
28	18.4 # 28	540/75 # 28	600/65 # 28							
30	14.9 # 30	380/85 # 30	420/70 # 30							
30	16.9 # 30	420/90 # 30	420/85 # 30	480/70 # 30	480/75 # 30	540/65 # 30	600/60 # 30			
30	18.4 # 30	21L # 30	460/85 # 30	520/70 # 30	600/65 # 30	710/55 # 30				
30	23.1 # 30	620/75 # 30	650/70 # 30	710/65 # 30						
32	8.3 # 32	210/95 # 32								
32	9.5 # 32	230/95 # 32	270/80 # 32	270/75 # 32						
32	12.4 # 32	320/85 # 32								
32	24.5 # 32	650/75 # 32	680/70 # 32	800/60 # 32						
32	30.5 L # 32	710/75 # 32	680/75 # 32	800/65 # 32	850/60 # 32	900/55 # 32	1050/50 # 32			
34	14.9 # 34	380/85 # 34								
34	16.9 # 34	420/85 # 34	480/70 # 34	480/75 # 34	500/70 # 34	540/65 # 34	600/60 # 34			
34	18.4 # 34	460/85 # 34	520/70 # 34	520/75 # 34	540/70 # 34	600/65 # 34	710/55 # 34	800/50 # 34		
34	20.8 # 34	23.1 # 34	620/75 # 34	710/70 # 34	650/65 # 34	710/60 # 34				
36	8.3 # 36	210/95 # 36								
36	12.4 # 36	320/85 # 36								
36	13.6 # 36	340/85 # 36								
36	9.5 # 36	230/95 # 36	270/80 # 36							
36	11.2 # 36	270/95 # 36								
38	9.5 # 38	230/95 # 38								
38	11.2 # 38	270/95 # 38	290/90 # 38							
38	12.4 # 38	320/85 # 38								
38	13.6 # 38	15.5 # 38	340/85 # 38	380/80 # 38	400/75 # 38					
38	14.9 # 38	380/85 # 38								
38	16.9 # 38	420/85 # 38	480/70 # 38	480/75 # 38	540/65 # 38	600/60 # 38				
38	18.4 # 38	460/85 # 38	520/70 # 38	520/75 # 38	600/65 # 38	650/60 # 38				
38	20.8 # 38	520/85 # 38	580/70 # 38	620/70 # 38	650/65 # 38	710/65 # 38	710/60 # 38	850/50 # 38		
42	9.5 # 42	230/95 # 42								
42	11.2 # 42	270/95 # 42	300/85 # 42							
42	12.4 # 42	300/95 # 42								
42	18.4 # 42	460/85 # 42	480/80 # 42	600/65 # 42						
42	20.8 # 42	520/85 # 42	580/70 # 42	620/70 # 42	650/65 # 42	750/60 # 42	710/60 # 42	850/55 # 42	900/50 # 42	
44	8.3 # 44	210/95 # 44								
44	9.5 # 44	230/95 # 44								
46	12.4 # 46	270/95 # 46	300/95 # 46	320/90 # 46	340/85 # 46					
46	20.8 # 46	520/85 # 46	650/65 # 46	620/70 # 46						
48	9.5 # 48	230/95 # 48								
48	13.6 # 48	340/85 # 48								

Notes

Symbol can be replaced with "R" for radial, "-" or "D" for Diagonal Tires



HEADQUARTER/FACTORY

Mahmutpaşa Mah. Kanalyolu Cad. No: 129 41140

Başıskele/Kocaeli TURKEY

Tel: +90 262 349 50 00

info@ozkalastik.com

SALES OFFICE/WAREHOUSE

Yaylacık Mah. Metin Sok. No: 1

Başıskele/Kocaeli TURKEY

Tel: +90 262 349 50 00

info@ozkalastik.com



ozkalastik



ozkalastik



ozkalastik



ÖZKA Tyre

www.ozkatyres.com